



# The Organisation of School Time in Europe

*Primary and General  
Secondary Education*

*2019/20*

*Eurydice – Facts and Figures*







# **The Organisation of School Time in Europe**

**Primary and  
General Secondary Education**

**2019/20**

**Eurydice – Facts and Figures**

This document is published by the Education, Audiovisual and Culture Executive Agency (EACEA, Education and Youth Policy Analysis).

**Please cite this publication as:**

European Commission/EACEA/Eurydice, 2019. *The Organisation of School Time in Europe. Primary and General Secondary Education – 2019/20*. Eurydice Facts and Figures. Luxembourg: Publications Office of the European Union.

ISBN 978-92-9484-103-2

ISSN 2443-5309

doi:10.2797/678694

EC-AH-19-001-EN-N

Text completed in September 2019.

Luxembourg: Publications Office of the European Union, 2019

© Education, Audiovisual and Culture Executive Agency, 2019

Reproduction is authorized provided the source is acknowledged.

Education, Audiovisual and Culture Executive Agency

Education and Youth Policy Analysis

Avenue du Bourget 1 (J-70 – Unit A7)

B-1049 Brussels

E-mail: [eacea-eurydice@ec.europa.eu](mailto:eacea-eurydice@ec.europa.eu)

Website: <http://ec.europa.eu/eurydice>

## INTRODUCTION

---

This report, based on national data, gives an overview on the length of the school year, the start and the end dates, the timing and length of school holidays and the number of school days. It covers both primary and general secondary education and key points are illustrated by comparative figures. The information is available for the 38 countries participating in the EU's Erasmus+ programme (28 Member States, Albania, Bosnia and Herzegovina, Switzerland, Iceland, Liechtenstein, Montenegro, North Macedonia, Serbia and Turkey). The reference year is 2019/20.

## KEY POINTS

---

### **In the majority of countries, the school year starts at the beginning of September**

Despite some differences, countries across Europe show many similarities regarding the structure of the school year. In 10 countries/regions, it generally starts in August. The countries where the school year begins the earliest are Denmark and Finland. In Germany, although there is an official starting date on 1st August, in reality schools in the different *Länder* begin between 5 August and 11 September. This year, in 18 European countries/regions, the school year starts on the 2nd of September. In some countries/regions, the starting date is usually around mid-September: this is the case in Southern Europe (e.g. Albania, Greece, Italy, Portugal and Spain) but also in Bulgaria and Luxembourg. In Malta, children return to school at the end of September. In Austria, Germany, Spain, Italy, the Netherlands and Switzerland, the beginning and the end of the school year vary significantly according to the regions.

See Figure 1.

### **The most common range of number of school days is between 170 and 190 across Europe**

The number of school days varies between 157.5 days in primary education in the Flemish Community of Belgium and 200 days in Denmark and Italy. In around half the countries/regions, it is between 170 and 180 days; in 17 countries/regions, the number varies between 181 and 190 days. In general, the number of school days is the same in primary and secondary education, but there are a few exceptions: in France and Albania (both in upper secondary education), Greece (in secondary education, teaching days and exam days are included), Romania and Serbia for example, the number of schools days is higher in secondary education than in primary.

The opposite (fewer school days in secondary education than in primary education) is observed in Ireland, Cyprus and Bosnia and Herzegovina (Republika Srpska). In countries where the number of school days varies according to the grade within a level, it is often the last grade that has the least number of school days.

See Figure 2.

### **The distribution and length of holidays during the school year varies between countries with the exception of the Christmas break**

In addition to the summer break, there are four other main periods of school holidays across Europe: the autumn holidays, Christmas and New Year's, winter/Carnival holidays as well the spring/Easter holidays. With the exception of the Christmas/New Year's holiday, other school breaks differ both in

length and timing. As some of these holidays are related to flexible calendar dates (Carnival and Easter), their timing changes slightly from year to year. As well as these common holidays, all countries offer additional days of holiday for public or religious occasions.

In the autumn, children have one week of holidays in 19 countries/regions; in the other countries, it varies between two days or three days (e.g. Czech Republic, the United Kingdom – Northern Ireland, and Iceland) to three weeks (Switzerland) or no holidays at all in 11 countries (e.g. Albania, Poland, Montenegro and North Macedonia). In Austria, the school year generally started with a long uninterrupted teaching period from the end of the summer holidays to the beginning of the Christmas holidays. From the school year 2019/20 onwards, autumn holidays at the same time are being introduced in all provinces. Nevertheless, the total number of school-free days remains unchanged.

At Christmas, nearly all countries offer two weeks of holidays; in a few countries, it is only one week (e.g. Slovenia and Serbia) and up to three weeks in the case of Germany. For Carnival, in around 20 countries/regions, pupils have one week of holidays and even two weeks in France, Poland and Turkey. On the contrary, nine countries do not have holidays during that period (e.g. Albania, Cyprus and Greece).

The spring/Easter holidays last one or two weeks in most of the countries. However, in a few between 4 days (e.g. Finland and Slovakia) to three weeks in Switzerland. No holidays at that period in Montenegro and Turkey.

See Figure 1.

### **Regional and local variations in school holidays exist within some countries**

The periods and dates of school holidays may vary within a country. In some countries, such as Germany, Spain, Italy, Austria and Switzerland, regional authorities make these decisions. In Sweden and Norway, the responsibility lies with the municipalities. However, in general, the number of days of teaching is fixed at central level.

In the Czech Republic, Germany, France, the Netherlands, Poland, Slovenia, Slovakia and Switzerland, the central authorities fix different dates for some periods of holidays according to the geographical area.

Despite some differences in the length of holidays, the pattern of holidays over the school year is similar for both primary and secondary education.

### **The length of the summer holidays varies a lot across Europe**

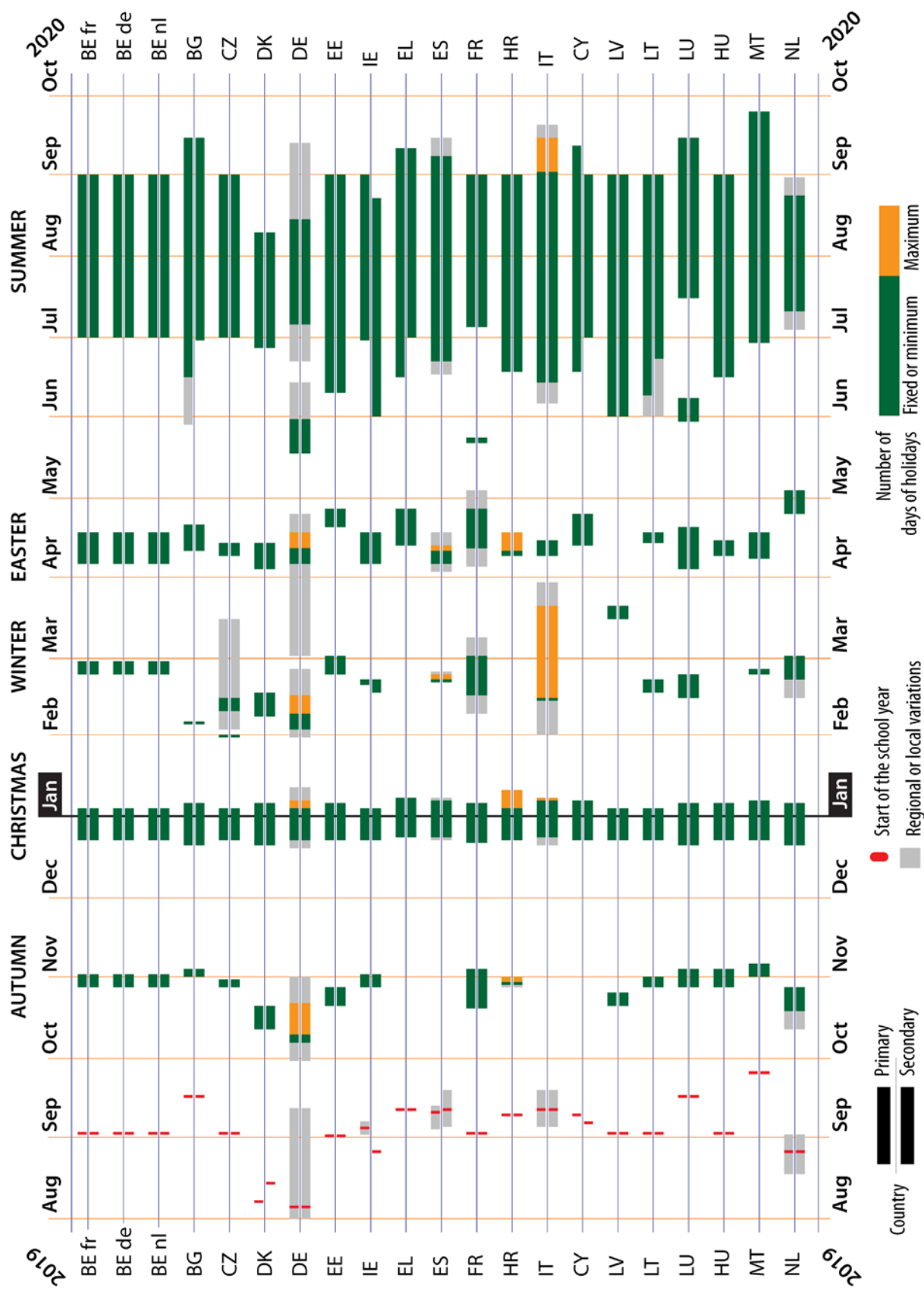
In Europe, the school year generally ends between the end of May and the second half of July. Mid-June is the time when the summer break begins in most countries. The length of the summer holidays varies significantly between countries: from 6 weeks in some German *Länder*, the Netherlands, the United Kingdom (England and Wales) and Liechtenstein, up to 13 weeks in Albania and Latvia, between 12 and 13 weeks in Italy and Portugal, and even 15 weeks in Bulgaria (for primary education).

Some countries show differences in the length of summer holidays depending on the level of education. In secondary education in Bosnia and Herzegovina (Republika Srpska), students start the summer holidays earlier than in primary education.

At the opposite, in Albania, Bulgaria, Greece and Serbia, students in primary education begin their summer holidays before those in secondary education.

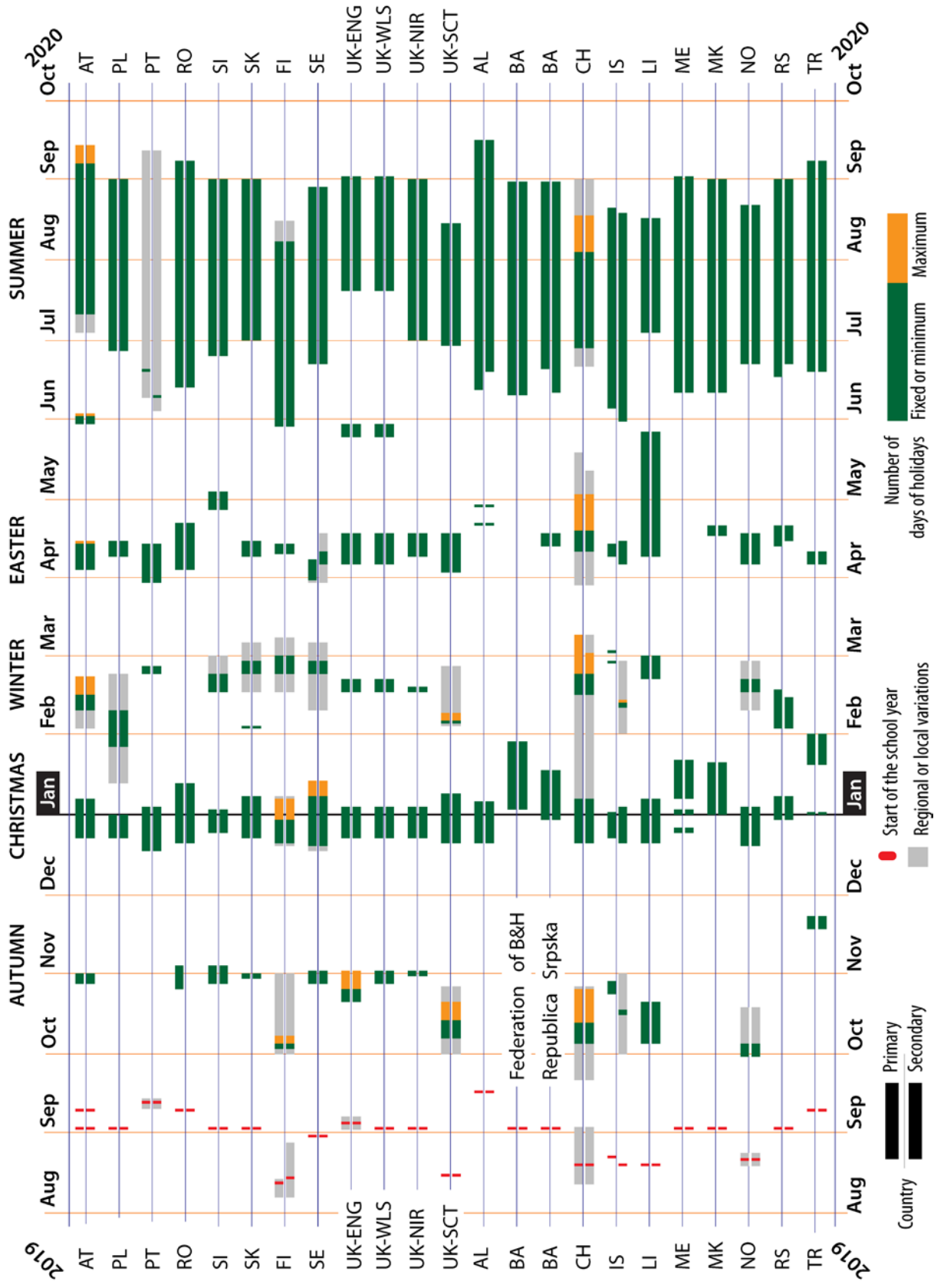
See Figure 3.

Figure 1: Length of the school year and distribution of holidays, general education, ISCED 1-3, 2019/20



NB: Denmark, Hungary and Latvia: The distinction is made between primary and lower secondary education (single structure) on one hand and upper secondary on the other hand.

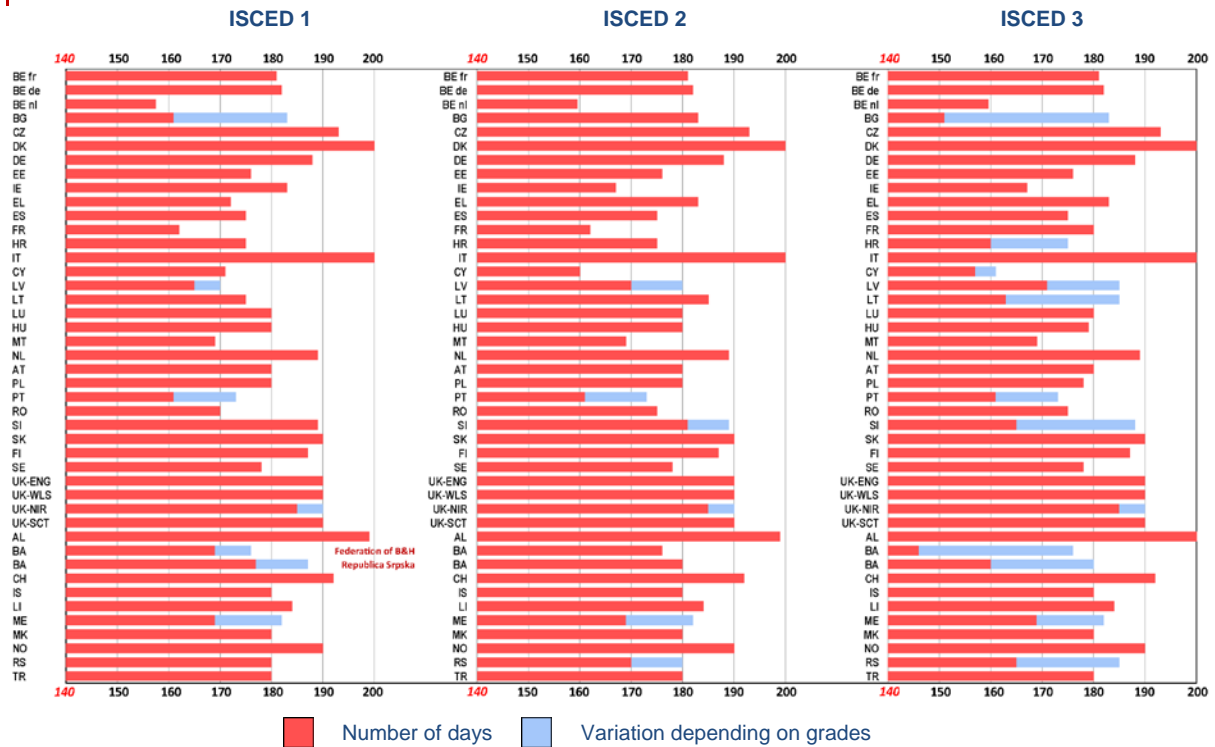
Figure 1 (continued): Length of the school year and distribution of holidays, general education, ISCED 1-3, 2019/20



NB: Slovenia, Sweden, Serbia and Iceland: The distinction is made between primary and lower secondary education (single structure) on one hand and upper secondary on the other hand.



Figure 2: Number of school days in primary and general secondary education, 2019/20



### Country-specific notes

**Belgium (BE nl):** Flanders has changed the methodology used to calculate the number of instruction days: a week now counts 4.5 days of instruction instead of 5 days – most schools do not have classes on Wednesday afternoon.

**Bulgaria:** The number of school days for secondary education is 183, except for the last grade (year XII) where the number is 151 because the end of this last students' school year is earlier – on 14 May.

**Croatia:** Legally prescribed minimum number of teaching days for ISCED 1-3 is 175, except for the final grades of upper secondary education for which minimum of 160 teaching days is prescribed.

**Latvia:** 165 days for grade 1; 170 for grades 2-8 and 10-11; 180 days for grade 9; 185 days for grade 12.

**Lithuania:** 185 days for secondary education, except for the last grade (IV gymnasium grade), where it is 163 because of the examinations.

**Portugal:** The total number of instruction days varies between 161 and 173 days due to the fact that some grades have national exams and finish classes in different days and also because schools can decide to begin classes between 10 and 13 September.

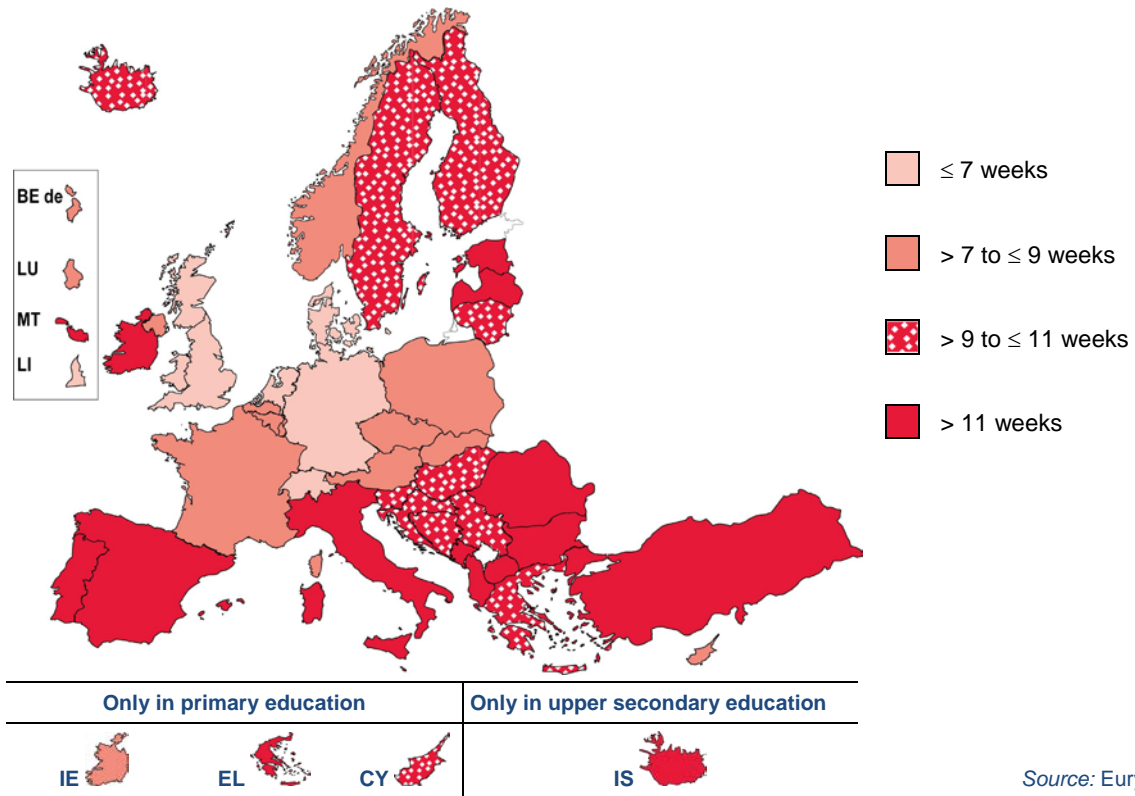
**Slovenia:** Single structure education: 182 days in the final grade; upper secondary education: 165 days in the final grade.

**Bosnia and Herzegovina: Federation of B&H:** Primary education: 169 days for the first and final grades; secondary education: 146 days for the final grade. **Republica Srpska:** Primary education: 177 days for the final grade; secondary education: 160 days for the final grade.

**Montenegro:** 166 days for the final year.

**Serbia:** Primary education: 170 days in the final grade; upper secondary education: 165 days in the final grade.

Figure 3: Length of summer holidays (in weeks), primary and secondary general education, 2019/20



Source: Eurydice.

**Country-specific notes**

**Bulgaria:** Between 11 and 15 weeks in primary education

**Switzerland:** Between 5 and 10 weeks in primary and secondary education. In most cantons, it's less than 7 weeks, but in Ticino it's 10 weeks.

# ALBANIA

## Organisation of school time in primary and general secondary education – 2019/20

	Primary and lower secondary education	General upper secondary education
<b>Starting date of students' school year</b>	16 September 2019	16 September 2019
<b>End of students' school year</b>	12 June 2020	19 June 2020
<b>Christmas/New Year</b>	21 December 2019 to 5 January 2020	21 December 2019 to 5 January 2020
<b>Spring/Easter</b>	21 and 28 April 2020	21 and 28 April 2020
<b>Third term</b>	28 April – 12 June 2020	28 April – 19 June 2020
<b>Summer</b>	12 June 2020	19 June 2020
<b>Public holidays (national/religious/occasional)</b>	8 October 2019 (National Youth Day) 19 October 2019 (Mother Theresa sanctification day) 28 November 2019 (Flag and Independence Day) 29 November 2019 (Liberation Day) 21 December 2019 – 5 January 2020 (Christmas Holiday) 13 March 2020 (Summer day) 23 March 2020 (Novruz Day) 20 April 2020 (Catholic Eastern) 27 April 2020 (Orthodox Eastern) 1 May 2020 (Labor Day) 5 June 2020 (Fiter Bajram)	8 October 2019 (National Youth Day) 19 October 2019 (Mother Theresa sanctification day) 28 November 2019 (Flag and Independence Day) 29 November 2019 (Liberation Day) 21 December 2019 – 5 January 2020 (Christmas Holiday) 13 March 2020 (Summer day) 23 March 2020 (Novruz Day) 20 April 2020 (Catholic Eastern) 20 April 2020 (Orthodox Eastern) 1 May 2020 (Labor Day) 5 June 2020 (Fiter Bajram)
<b>Starting date of teachers' school year</b>	16 September 2019	16 September 2019
<b>End of teachers' school year</b>	12 June 2020	19 June 2020

Primary and lower secondary education

Teaching days: 199

Holidays: 123

General upper secondary education

Teaching days: 204

Holidays 123

Source: Eurydice.

## AUSTRIA

### Organisation of school time in primary and general secondary education – 2019/20

	Primary education	General secondary education
<b>Starting date of students' school year</b>	2 September 2019: Burgenland, Niederösterreich, Wien 9 September 2019: Kärnten, Oberösterreich, Salzburg, Steiermark, Tirol, Vorarlberg	2 September 2019: Burgenland, Niederösterreich, Wien 9 September 2019: Kärnten, Oberösterreich, Salzburg, Steiermark, Tirol, Vorarlberg
<b>End of students' school year</b>	3 July 2020: Burgenland, Niederösterreich, Wien 10 July 2020: Kärnten, Oberösterreich, Salzburg, Steiermark, Tirol, Vorarlberg	3 July 2020: Burgenland, Niederösterreich, Wien 10 July 2020: Kärnten, Oberösterreich, Salzburg, Steiermark, Tirol, Vorarlberg
<b>Autumn</b>	28-31 October 2019	28-31 October 2019
<b>Christmas/New Year</b>	2 weeks 23 December 2019 – 6 January 2020	2 weeks 23 December 2019 – 6 January 2020
<b>Winter/Carnival</b>	1 week 3-8 February 2020: Niederösterreich, Wien 10-15 February 2020: Burgenland, Kärnten, Salzburg, Tirol, Vorarlberg 17-22 February 2020: Oberösterreich, Steiermark	1 week 3-8 February 2020: Niederösterreich, Wien 10-15 February 2020: Burgenland, Kärnten, Salzburg, Tirol, Vorarlberg 17-22 February 2020: Oberösterreich, Steiermark
<b>Spring/Easter</b>	1 week 4-13./14. April 2020	1 week 4-13./14. April 2020
<b>Third term</b>	3 or 4 days 30 May – 1./2. June 2020	3 or 4 days 30 May – 1./2. June 2020
<b>Summer</b>	About 9 weeks 4 July – 6 September 2020: Burgenland, Niederösterreich, Wien 11 July – 13 September 2020: Kärnten, Oberösterreich, Salzburg, Steiermark, Tirol, Vorarlberg	About 9 weeks 4 July – 6 September 2020: Burgenland, Niederösterreich, Wien 11 July – 13 September 2020: Kärnten, Oberösterreich, Salzburg, Steiermark, Tirol, Vorarlberg
<b>Public/religious holidays</b>	1 November 2019 2 November 2019 8 December 2019 1 May 2020 21 May 2020 11 June 2020 1 extra religious holiday per province ( <i>Land</i> )	1 November 2019 2 November 2019 8 December 2019 1 May 2020 21 May 2020 11 June 2020 1 extra religious holiday per province ( <i>Land</i> )
<b>Starting/end date of teachers' school year</b>	The teachers' school year is the same as the pupils' school year.	The teachers' school year is the same as the pupils' school year.

## BELGIUM – FLEMISH COMMUNITY

### Organisation of school time in primary and general secondary education – 2019/20

	Primary education	General secondary education
<b>Starting date of students' school year</b>	2 September 2019	2 September 2019
<b>End of students' school year</b>	30 June 2020	30 June 2020
<b>Autumn holidays</b>	1 week 28 October – 3 November 2019	1 week 28 October – 3 November 2019
<b>Christmas/New Year holidays</b>	2 weeks 23 December 2019 – 5 January 2020	2 weeks 23 December 2019 – 5 January 2020
<b>Winter/Carnival</b>	1 week 24 February – 1 March 2020	1 week 24 February – 1 March 2020
<b>Spring/Easter</b>	2 weeks 6-19 April 2020	2 weeks 6-19 April 2020
<b>Third term</b>	Between Easter holidays and summer holidays	Between Easter holidays and summer holidays
<b>Summer</b>	9 weeks 1 July – 31 August 2020	9 weeks 1 July – 31 August 2020
<b>Public holidays (national/religious/occasional)</b>	1 November 2019, 2 November 2019 (All Saints' Day, All Souls' Day) <sup>(1)</sup> 11 November 2019 (Armistice Day) 13 April 2020 (Easter Monday) 1 May 2020 (Labour Day) 21-22 May 2020 (Ascension Day) 1 June 2020 (Whit Monday) + 4 days to be decided by the school	1 November 2019, 2 November 2019 (All Saints' Day, All Souls' Day) 11 November 2019 (Armistice Day) 13 April 2020 (Easter Monday) 1 May 2020 (Labour Day) 21-22 May 2020 (Ascension Day) 1 June 2020 (Whit Monday) + 4 days to be decided by the school
<b>Starting date of teachers' school year</b>	1 September 2019	1 September 2019
<b>End of teachers' school year</b>	30 June 2020	30 June 2020

<sup>(1)</sup> Please note that 1st November is the last day of Autumn Holidays and 2 November fall on a Saturday in 2019, for both primary and secondary education, and thus don't make for extra days off.

## BELGIUM – FRENCH COMMUNITY

### Organisation of school time in primary and general secondary education – 2019/20

	Primary education	General secondary education
<b>Starting date of students' school year</b>	2 September 2019	2 September 2019
<b>End of students' school year</b>	30 June 2020	30 June 2020
<b>Autumn holidays</b>	1 week 28 October – 1 November 2019	1 week 28 October – 1 November 2019
<b>Winter/Christmas/New Year</b>	2 weeks 23 December 2019 – 3 January 2020	2 weeks 23 December 2019 – 3 January 2020
<b>Carnival</b>	1 week 24-28 February 2020	1 week 24-28 February 2020
<b>Spring/Easter</b>	2 weeks 6-17 April 2020	2 weeks 6-17 April 2020
<b>Summer</b>	9 weeks 1 July – 30 August 2020	9 weeks 1 July – 30 August 2020
<b>Public/religious holidays</b>	27 September 2019 11 November 2019 1 May 2020 21-22 May 2020 1 June 2020	27 September 2019 11 November 2019 1 May 2020 21-22 May 2020 1 June 2020
<b>Starting date of teachers' school year</b>	2 September 2019	2 September 2019
<b>End of teachers' school year</b>	30 June 2020	30 June 2020

Source: Eurydice.

## BELGIUM – GERMAN-SPEAKING COMMUNITY

### Organisation of school time in primary and general secondary education – 2019/20

	Primary education (ISCED 1)	Secondary education (ISCED 2 + 3)
<b>Starting date of students' school year</b>	2 September 2019	2 September 2019
<b>End of students' school year</b>	30 June 2020	30 June 2020
<b>Autumn holidays</b>	1 week 28 October – 1 November 2019	1 week 28 October – 1 November 2019
<b>Christmas/New Year</b>	2 weeks 23 December 2019 – 3 January 2020	2 weeks 23 December 2019 – 3 January 2020
<b>Winter/Carnival</b>	1 week 24-28 February 2020	1 week 24-28 February 2020
<b>Spring/Easter</b>	2 weeks 6-17 April 2020	2 weeks 6-17 April 2020
<b>Third term</b>	–	–
<b>Summer</b>	9 weeks 1 July – 30 August 2020	9 weeks 1 July – 30 August 2020
<b>Public/religious holidays</b>	1 November 2019 11 November 2019 15 November 2019 24-26 December 2019 1 January 2020 13 April 2020 1 May 2020 21 May 2020 1 June 2020	1 November 2019 11 November 2019 15 November 2019 24-26 December 2019 1 January 2020 13 April 2020 1 May 2020 21 May 2020 1 June 2020
<b>Starting date of teachers' school year</b>	2 September 2019	2 September 2019
<b>End of teachers' school year</b>	30 June 2020	30 June 2020

#### Additional notes

- During the last working days of August, secondary education teachers may be consigned to conduct exams of a second chance.
- A school year has a minimum of 180 and a maximum of 184 days of school days.
- In the school year 2019/20, there will be 2 compensation days to be fixed by the schools.

# BOSNIA AND HERZEGOVINA

## Federation of Bosnia and Herzegovina

### Organisation of school time in primary and general secondary education – 2019/20

	Primary education	General secondary education
<b>Starting date of students' school year</b>	2 September 2019	2 September 2019
<b>End of students' school year</b>	9 June 2020 (2 June 2020 in the final year)	9 June 2020 (4 May 2020 in the final year)
<b>Winter holidays</b>	3-28 January 2020	3-28 January 2020
<b>Spring/Easter</b>	–	-
<b>Summer holidays</b>	10 June – 30 August 2020	10 June – 30 August 2020
<b>Public/religious holidays</b>	<b>Public holidays:</b> 25 November 2019 (Statehood Day) 1-2 January 2020 (New Year) 1 March 2020 (Independence Day) 1-2 May 2020 (International Labour Day) <b>Religious holidays:</b> 25 December 2019 (Catholic Christmas) 22 December 2019 (Hanuka) 8-16 April 2020 (Pesah) 12 April 2020 (Catholic Easter) 19 April 2020 (Orthodox Easter) 24 and 25 June 2020 (Eid Al-Fitr)	
<b>Starting date of teachers' school year</b>	20 August 2019	20 August 2019
<b>End of teachers' school year</b>	30 June 2020	30 June 2020

#### Additional notes

Religious holidays are celebrated depending on the religious community.

There are some differences between the cantons within the Federation of Bosnia and Herzegovina. The given data are the most common for most cantons. Apart from these dates, each canton (ten in total) has established its own celebration day.



## BOSNIA AND HERZEGOVINA (CONTINUED)

### Republika Srpska

#### Organisation of school time in primary and general secondary education – 2019/20

	Primary education	General secondary education
<b>Starting date of students' school year</b>	2 September 2019	2 September 2019
<b>End of students' school year</b>	19 June 2020 (5 June 2020 in the final year)	10 June 2020 (17 May 2020 in the final year)
<b>Winter holidays</b>	30 December 2019 – 17 January 2020	30 December 2019 – 17 January 2020
<b>Spring/Easter</b>	13-17 April 2020	13-17 April 2020
<b>Summer holidays</b>	20 June – 30 August 2020	11 June – 30 August 2020
<b>Public/religious holidays</b>	<p><b>Public holidays:</b>            21 November 2019 (Day of establishing of General Framework Agreement for Peace)            1-2 January 2020 (New Year)            9 January 2020 Day of Republic            1-2 May 2020 (International Labour Day)            9 May 2020 (Day of victory over fascism)</p> <p><b>Religious holidays:</b>            25 December 2019 (Catholic Christmas)            12 April 2020 (Catholic Easter)            19 April 2020 (Orthodox Easter)</p>	
<b>Starting date of teachers' school year</b>	17 August 2019	17 August 2019
<b>End of teachers' school year</b>	26 June 2020	17 June 2020

#### Additional notes

Religious holidays are celebrated depending the religion community. Holidays which are dated on non-working days are not taken into account.

## BULGARIA

### Organisation of school time in primary and general secondary education – 2019/20

	Primary education	General secondary education
<b>Starting date of students' school year</b>	16 September 2019	16 September 2019
<b>End of students' school year</b>	Year I-III: 29 May 2020 Year IV-VI: 16 June 2020 Year V-VI (sports schools): 30 June 2020 Year VII: 30 June 2020	Year VIII, IX, X, XI: 30 June 2020 Year XII: 14 May 2020
<b>Autumn holidays</b>	1-3 November 2019	1-3 November 2019
<b>Christmas/New Year</b>	21 December 2019 – 5 January 2020	21 December 2019 – 5 January 2020
<b>Winter/Carnival</b>	5 February 2020	5 February 2020
<b>Spring/Easter</b>	11-20 April 2020	11-20 April 2020 Year XII: 16-20 April 2020
<b>Summer</b>	Year I-III: 29 May – 14 September 2020 Year IV-VI: 16 June – 14 September 2020 Year V-VI (sports schools): 30 June – 14 September 2020 Year VII: 30 June – 14 September 2020	Year VIII, IX, X, XI: 30 June – 14 September 2020
<b>Public/religious holidays</b>	22 September 2019 24 December 2019 3 March 2020 1 May 2020 6 May 2020 24-25 May 2020	22 September 2019 24 December 2019 3 March 2020 1 May 2020 6 May 2020 24-25 May 2020
<b>Other dates</b>	<b>20 May 2020</b> State graduation exam in Bulgarian language and literature <b>22 May 2020</b> Second state graduation exam <b>9 June 2020</b> National external assessment after Year 7 and Year 10 in Bulgarian language and literature <b>11 June 2020</b> National external assessment after Year 7 and Year 10 in mathematics	
<b>Starting date of teachers' school year</b>	See Additional notes	See Additional notes
<b>End of teachers' school year</b>	See Additional notes	See Additional notes

Source: Eurydice

#### Additional notes

**Teachers' school year:** The length of the teachers' school year is defined at school level. The school head is responsible for setting and drawing up of the school's timetable. The most common situation is when teachers, on employment contract, are required to be present and at disposal at school at the beginning of September so that they can get prepared well in advance and deal with the school documentation for the new school year.

The end of the teachers' school year is also determined at school level. If teachers are needed to be at school in order to help, complete or close the school documentation, or if they are involved in other out-of-class activities, school projects, initiatives, etc., they usually are supposed to stay extra days after the beginning of the summer holidays for pupils.

## CROATIA

### Organisation of school time in primary and general secondary education – 2019/20

	Primary and general secondary education
<b>Starting date of students' school year</b>	9 September 2019
<b>End of students' school year</b>	17 June 2020 (22 May 2020 in the final year of upper general secondary education)
<b>Autumn holidays</b>	Four possible options for the distribution of holidays (see Additional notes): i. No autumn holidays ii. 28-31 October 2019 iii. 29-31 October 2019 iv. 30-31 October 2019
<b>Winter holidays</b>	i. 23 December 2019 – 10 January 2020 ii. 23 December 2019 – 3 January 2020 iii. 23 December 2019 – 10 January 2020 iv. First part: 23 December 2019 – 3 January 2020 Second part: 24-28 February 2020
<b>Spring holidays</b>	i. 10-17 April 2020 ii. 10-17 April 2020 iii. 9-10 April 2020 iv. 9-10 April 2020
<b>Summer holidays</b>	18 June – 31 August 2020 (end of the school year, see Additional notes)
<b>Public/religious holidays</b>	*8 October 2019 (Independence Day) 1 November 2019 (All Saints Day) 25 December 2019 (Christmas Day) 26 December 2019 (Saint Stephen's Day) 1 January 2020 (New Year's Day) 6 January 2020 (Epiphany) 12 April 2020 (Easter) 13 April 2020 (Easter Monday) 1 May 2020 (International Labour Day) 11 June 2020 (Corpus Christi)
<b>Starting date of teachers' school year</b>	Not specified, see Additional notes.
<b>End of teachers' school year</b>	Not specified, see Additional notes.

Source: Eurydice.

## CROATIA (CONTINUED)

---

### Additional notes

In the Decision on the Beginning and the End of the School Year, Number of Working Days and Duration of Holidays for Primary and Secondary School Pupils for the School Year 2019/20 (Odluka o početku i završetku nastavne godine, broju radnih dana i trajanju odmora učenika osnovnih i srednjih škola za školsku godinu 2019./2020., Official Gazette 48/2019) four possible options for the distribution of holidays in the school year were determined. Founders of schools based on consultations with schools decided on one option for all schools for which they have founding rights. If the founder has not decided on the option, first option automatically applied. In most of the schools, holidays will be distributed according to the first option, followed by the fourth option.

Article 48 of the Act on Education in Primary and Secondary Schools (Zakon o odgoju i obrazovanju u osnovnoj i srednjoj školi, Official Gazette 87/2008, 86/2009, 105/2010, 90/2011, 5/2012, 16/2012, 86/2012, 126/2012, 94/2013, 152/2014, 07/2017, 68/2018) stipulates that the school year starts 1 September and ends 31 August. The teaching activity is organized within two semesters. The time allocated to teaching in primary and secondary schools should not be less than 175 teaching days, or 35 teaching weeks and for the students in the final year of upper general secondary education the time allocated to teaching should not be less than 160 teaching days, or 32 teaching weeks. During the school year students have the right to winter, spring and summer holidays.

Starting from the school year 2010/11, counties, regional administrative units (in total 21) are allowed to request some modifications of the school calendar for the coming year (the date of the beginning of the school year and the duration of the winter break) which apply at the County level.

**Summer holidays:** End of the school year is written according to the cited Article 48 of the Act on Education in Primary and Secondary Schools. Exact end date of the summer holidays is not stated in the decision for the school year 2019/20. Teaching activity in school year after the summer holidays generally starts on the first Monday in September, in 2020 that would be 7 September.

**Teachers' school year:** The length of the teachers' school year is not defined by the top-level decisions or laws. Generally, teachers have to be present at the end of August for preparation of the beginning of the school year to mid-July for other activities at the end of the school year. According to the collective labour agreements for primary and secondary school teachers (Kolektivni ugovor za zaposlenike u osnovnoškolskim ustanovama, Official Gazette, 51/2018; Kolektivni ugovor za zaposlenike u srednjoškolskim ustanovama, Official Gazette, 51/2018), teachers' annual leave coincides with students' holidays and the total duration of the annual leave should not exceed 30 working days.

\*All public and religious holidays during the teaching year are listed in the table.

## CYPRUS

### Organisation of school time in primary and general secondary education – 2019/20

	Primary education	General secondary education
<b>Starting date of students' school year*</b>	9 September 2019	6 September 2019 (see Additional notes)
<b>End of students' school year*</b>	17 June 2020	Lower secondary: 19 May 2020 Upper secondary: Grade A & B: 20 May 2020 Grade C: 14 May 2020 (see Additional notes)
<b>Christmas/New Year</b>	2 weeks 23 December 2019 – 6 January 2020	2 weeks 24 December 2019 – 6 January 2020
<b>Spring/Easter</b>	2 weeks 13-24 April 2020	2 weeks 13-24 April 2020
<b>Summer</b>	11 weeks 18 June – 11 September 2020	9 weeks (62 days) 1 July – 31 August 2020
<b>Public/religious holidays</b>	1 October 2019 28 October 2019 13 November 2019 30 January 2020 2 March 2020 25 March 2020 1 April 2020 1 May 2020 28 May 2020 8 June 2020 11 June 2020	1 October 2019 13 November 2019 30 January 2020 2 March 2020 25 March 2020 1 April 2020 1 May 2020 8 June 2020 11 June 2020
<b>Starting date of teachers' school year**</b>	2 September 2019	2 September 2019
<b>End of teachers' school year**</b>	19 June 2020	30 June 2020

Source: Eurydice.

#### Additional notes

##### Primary education

**\*Students:** In primary education, lessons begin on the second Monday of September and end on the Wednesday before the penultimate Friday of June. The total number of school days for the school year 2019/20 is 171 and for the holidays 94 (including summer vacation).

**\*\*Teachers:** Teachers in primary education need to be at school from the first Monday of September until the penultimate Friday of June. The official teachers' school year is longer than student's school year in primary education as it includes preparation of the school timetable, sorting out of classes and lessons, and a two-day teachers' professional learning programme. The total number of school days for the school year 2019/20 is 178 and for the holidays 87. In primary education, according to the Regulations for the Functioning of Primary Education Schools, the official school year is from 1 September each year until 31 August next year (1 September 2019 – 31 August 2020).

## CYPRUS (CONTINUED)

---

### Secondary education

**\*Students:** Lessons, in secondary general education (lower and upper), begin on the 5th working day of September. The dates given designate the end of lessons. After that, a two to three weeks end-of-year examination period follows. The dates given for the end of lessons are indicative as the Minister of Education has the right to change them under certain circumstances. The total number of schooldays (students at the school) is 160 for lower secondary, 161 for grades A' and B' in upper secondary and 157 for grade C' in upper secondary. The total number of holidays during schooling days is 29.

**\*\*Teachers:** The official teachers' school year is longer than the students' school year in secondary education. In secondary general education, according to the law (Regulations for the Functioning of Secondary Education Schools), the official school year is from 1 September each year until 31 August next year (1 September 2019 – 31 August 2020). Teachers are on duty from the first working day of September till the last working day of June, excluding holidays.

# CZECH REPUBLIC

## Organisation of school time in primary and general secondary education – 2019/20

	Primary education	General secondary education
<b>Starting date of students' school year</b>	2 September 2019	2 September 2019
<b>End of students' school year</b>	30 June 2020	30 June 2020
<b>Autumn holidays</b>	28-30 October 2019	28-30 October 2019
<b>Christmas/New Year</b>	23 December 2019 – 3 January 2020	23 December 2019 – 3 January 2020
<b>Winter/Carnival</b>	31 January 2020	31 January 2020
<b>Spring/Easter</b>	1 week between 3 February and 15 March 2020 depending on the region (spring holidays) 9-13 April 2020 (Easter)	1 week between 3 February and 15 March 2020 depending on the region (spring holidays) 9-13 April 2020 (Easter)
<b>Summer holidays</b>	1 July – 31 August 2020	1 July – 31 August 2020
<b>Public/religious holidays</b>	28 September 2019 (Saturday) 28 October 2019 17 November 2019 (Sunday) 24-26 December 2019 1 January 2020 10 and 13 April 2020 (Easter) 1 May 2020 8 May 2020 5 July 2020 6 July 2020 (Saturday)	28 September 2019 (Saturday) 28 October 2019 17 November 2019 (Sunday) 24-26 December 2019 1 January 2020 10 and 13 April 2020 (Easter) 1 May 2020 8 May 2020 5 July 2020 6 July 2020 (Saturday)
<b>Starting date of teachers' school year</b>	Not specified	Not specified
<b>End of teachers' school year</b>	Not specified	Not specified

SPECIFICATION OF TERMS FOR SPRING HOLIDAYS	
Term 2019	Regions
<b>3-9 February</b>	Mladá Boleslav, Příbram, Tábor, Prachatice, Strakonice, Ústí nad Labem, Chomutov, Most, Jičín, Rychnov nad Kněžnou, Olomouc, Šumperk, Opava, Jeseník
<b>10-16 February</b>	Benešov, Beroun, Rokycany, České Budějovice, Český Krumlov, Klatovy, Trutnov, Pardubice, Chrudim, Svitavy, Ústí nad Orlicí, Ostravaměsto, Prostějov
<b>17-23 February</b>	Praha 1 až 5, Blansko, Brno-město, Brno-venkov, Břeclav, Hodonín, Vyškov, Znojmo, Domažlice, Tachov, Louny, Karviná
<b>24 February – 1 March</b>	Praha 6 až 10, Cheb, Karlovy Vary, Sokolov, Nymburk, Jindřichův Hradec, Litoměřice, Děčín, Přešov, Frýdek-Místek
<b>2-8 March</b>	Kroměříž, Uherské Hradiště, Vsetín, Zlín, Praha-východ, Praha-západ, Mělník, Rakovník, Plzeň-město, Plzeň-sever, Plzeň-jih, Hradec Králové, Teplice, Nový Jičín
<b>9-15 March</b>	Česká Lípa, Jablonec nad Nisou, Liberec, Semily, Havlíčkův Brod, Jihlava, Pelhřimov, Třebíč, Žďár nad Sázavou, Kladno, Kolín, Kutná Hora, Písek, Náchod, Bruntál

Source: Eurydice.

### Additional notes

According to the Labour Code, the holiday for teachers at primary and secondary level is 8 weeks each calendar year. They take it primarily in the time of school holidays.

Education Act (No. 561/2004 Coll., Article 24) states that head teachers may, for serious reasons, in particular for organisational and technical reasons, during school lessons permit for pupils of maximum of five (5) days off within the school year. In practice, schools often take this opportunity during the school year.

The total number of school days is 193. The total number of school holidays is 90 (including some national holidays) plus 4 other national holidays.

## DENMARK

### Organisation of school time in primary and general secondary education – 2019/20

	Primary and lower secondary education ( <i>Folkeskole</i> )	General secondary education ( <i>Gymnasium</i> )
<b>Starting date of students' school year</b>	7 August 2019	14 August 2019
<b>End of students' school year</b>	26 June 2020	26 June 2020
<b>Autumn holidays</b>	12-20 October 2019	12-20 October 2019
<b>Christmas/New Year</b>	21 December 2019 – 5 January 2020	21 December 2019 – 5 January 2020
<b>Winter/Carnival</b>	8-16 February 2020	8-16 February 2020
<b>Spring/Easter</b>	4-13 April 2020	4-13 April 2020
<b>Summer</b>	Starting on 27 June 2020	Starting on 27 June 2020
<b>Public/religious holidays</b>	1 May 2020* 8 May 2020 21-22 May 2020 (only 21 May is a public holiday) 1 June 2020 5 June 2020**	8 May 2020 21 May 2020 1 June 2020 5 June 2019**
<b>Starting date of teachers' school year</b>	Not determined at central level – differs at the various schools/institutions. In general, teachers start a few days before pupils/students.	
<b>End of teachers' school year</b>	Not determined at central level. Usually the teachers' school year follows that of the pupils/students.	

Source: Eurydice.

#### Additional notes

The above-mentioned dates for the *Folkeskole* are valid for the schools in Aarhus Municipality: <https://aarhus.dk/borger/pasning-skole-og-uddannelse/skole-sfo-og-klub/naar-dit-barn-gaar-i-skole/ferier-og-fridage/>. The number of holidays and public holidays in Aarhus Municipality in the school year 2019/20 (1 August 2019 to 31 July 2020) is 165 days, including weekends and public holidays. This means that the number of school days is 200.

The dates for upper secondary education are taken from Slagelse Gymnasium: <http://www.slagelse-gym.dk/ferieplanen>. The number of school days in upper secondary education is also 200 per year and 165 days of holidays, public holidays and weekends.

The winter/carnival holiday can vary across the country as it depends on the municipality, which usually decides whether the winter holiday is in week 7 or 8.

*Folkeskoler*, i.e. schools offering comprehensive primary and lower secondary education, are free to decide on the number of holidays and their distribution, given that they offer a minimum of 200 school days each year. The Ministry of Education determines the last day of the school year, which is the case for both primary, lower secondary and general upper secondary education. In addition, the Ministry may also issue guidelines regarding the distribution of holidays.

\* Some schools are closed on 1 May (Labour Day) while others are open.

\*\* The Constitution Day (*Grundlovsdag*) 5 June is not a public holiday. However, some schools are closed on this day while others are open.



# ESTONIA

## Organisation of school time in primary and general secondary education – 2019/20

	Primary education	General secondary education
<b>Starting date of students' school year</b>	1 September 2019	1 September 2019
<b>End of students' school year</b>	31 August 2020	31 August 2020
<b>Autumn holidays</b>	1 week 21-27 October 2019	1 week 21-27 October 2019
<b>Christmas/New Year</b>	2 weeks 23 December 2019 – 5 January 2020	2 weeks 23 December 2019 – 5 January 2020
<b>Winter</b>	1 week 24 February – 1 March 2020	1 week 24 February – 1 March 2020
<b>Spring</b>	1 week 20-26 April 2020	1 week 20-26 April 2020
<b>Summer</b>	11.5 weeks 10 June – 31 August 2020	11.5 weeks 10 June – 31 August 2020
<b>Public/religious holidays</b>	24-26 December 2019 (Christmas) 1 January 2020 (New Year's Day) 24 February 2020 (Independence Day) 10 April 2020 (Good Friday) 1 May 2020 (May Day) 23 June 2020 (Victory Day) 24 June 2020 (St John's Day) 20 August 2020 (Independence Restoration Day)	24-26 December 2019 (Christmas) 1 January 2020 (New Year's Day) 24 February 2020 (Independence Day) 10 April 2020 (Good Friday) 1 May 2020 (May Day) 23 June 2020 (Victory Day) 24 June 2020 (St John's Day) 20 August 2020 (Independence Restoration Day)
<b>Starting date of teachers' school year</b>	The beginning and the end of a teacher's school year depend on the individual school and teacher. According to the legislation, teachers have 56 days (8 weeks) of holidays. Generally, they take holidays in the middle of June and are back in the middle of August.	
<b>End of teachers' school year</b>		

Source: Eurydice.

### Additional notes

The Basic Schools and Upper Secondary Schools Act (§24) stipulates that an academic year shall start on 1 September and a study period shall include not less than 175 days of study (35 weeks).

School holidays (and accordingly the end of the school year) are determined by a regulation of the Minister of Education and Research for every school year. Based on a proposal of the head of the school and with the approval of the board of trustees, the owner of a school may establish school holidays different from those established by the Minister, taking into account that during the academic year there are at least four school holidays with a total duration of at least 12 weeks, whereby the summer holiday lasts at least eight consecutive weeks.

## FINLAND

### Organisation of school time in primary and general secondary education – 2019/20

	Primary education	General secondary education
<b>Starting date of students' school year</b>	Between 7 and 13 August 2019	Between 7 and 27 August 2019
<b>End of students' school year</b>	29-30 May 2020	29-30 May 2020
<b>Autumn holidays</b>	2-5 days in October 2019	2-5 days in October 2019
<b>Christmas/New Year</b>	1-2 weeks between 20 December 2019 and 7 January 2020	1-2 weeks between 20 December 2019 and 7 January 2020
<b>Winter/Carnival</b>	1 week between 17 February and 8 March 2020	1 week between 17 February and 8 March 2020
<b>Spring/Easter</b>	4 days between 10 and 13 April 2020	4 days between 10 and 13 April 2020
<b>Summer</b>	10-11 weeks between 29 May to mid-August 2020	10-11 weeks between 29 May to mid-August 2020
<b>Public/religious holidays</b>	2 November 2019 (All Saints Day) 6 December 2019 (Independence Day) 24 December 2019 (Christmas Eve) (partly) 25 December 2019 (Christmas Day) 26 December 2019 (Boxing Day) 1 January 2020 (New Year's Day) 6 January 2020 (Epiphany) 10 April 2020 (Good Friday) 12 April 2020 (Easter Day) 13 April 2020 (Easter Monday) 1 May 2020 (May Day) 21 May 2020 (Ascension Day) 19 June 2020 (Midsummer Eve) (partly)	2 November 2019 (All Saints Day) 6 December 2019 (Independence Day) 24 December 2019 (Christmas Eve) (partly) 25 December 2019 (Christmas Day) 26 December 2019 (Boxing Day) 1 January 2020 (New Year's Day) 6 January 2020 (Epiphany) 10 April 2020 (Good Friday) 12 April 2020 (Easter Day) 13 April 2020 (Easter Monday) 1 May 2020 (May Day) 21 May 2020 (Ascension Day) 19 June 2020 (Midsummer Eve) (partly)
<b>Starting date of teachers' school year <sup>(1)</sup></b>	Between 7 and 27 August 2019	Between 7 and 27 August 2019
<b>End of teachers' school year</b>	29 to 30 May 2020	29 to 30 May 2020

Source: Eurydice.

#### Additional notes

Independence day, Epiphany and 1 May are deducted from the total number of school days (190 days) if they are on any weekday other than Saturday. In the school year 2019/20, the number of school days will consequently be 187.

(1) There are no exact starting and ending dates of teachers' school year because their duties are regulated according to the collective agreement for teachers. In the agreement, the parties have agreed that the teachers have a calculatory holiday, which begins in mid-June and the length of holiday depends mainly on years in occupation. In practice, teachers' holidays coincide with students' holidays. However, teachers have their planning and INSET obligations, which they have to do both during and outside the school year. In general, teachers start a school year a couple days before students.

## FRANCE

### Organisation of school time in primary and general secondary education – 2019/20

	Primary and general secondary education
<b>Starting date of students' school year</b>	2 September 2019
<b>End of students' school year</b>	4 July 2020
<b>Autumn holidays</b>	2 weeks 20 October – 3 November 2019
<b>Christmas/New Year</b>	2 weeks 22 December 2019 – 5 January 2020
<b>Winter/Carnival</b>	2 weeks 23 February – 8 March 2020 (zone A) 16 February – 1 March 2020 (zone B) 9-23 February 2020 (zone C)
<b>Spring/Easter</b>	2 weeks 19 April – 3 May 2020 (zone A) 12-26 April 2020 (zone B) 5-19 April 2020 (zone C)
<b>Additional holiday for 2019/20</b>	22 & 23 May 2020
<b>Summer</b>	8 weeks 5 July 2020 – 31 August 2020
<b>Public holidays (national/religious holidays)</b>	The following dates are regarded as public holidays by all institutions: 1 November 2019 (All Saints' Day) * 11 November 2019 (1918 Armistice Day) 25 December 2019 (Christmas) * 1 January 2020 (New Year) * 13 April 2020 (Easter Monday) ** 1 May 2020 (Labour Day) *** 8 May 2020 (end of WWII in Europe) 21 May 2020 (Ascension Day) 1 June 2020 (Whit Monday) 14 July 2020 (National holiday) * 15 August 2020 (Assumption Day) * * Days already included in 2019/20 school holidays ** Day already included in 2019/20 school holidays for zones B & C *** Day already included in 2019/20 school holidays for zone A
<b>Starting date of teachers' school year</b>	30 August 2019
<b>End of teachers' school year</b>	5 July 2020

Source: Eurydice.

#### Additional notes

**Zone A:** Besançon, Bordeaux, Clermont-Ferrand, Dijon, Grenoble, Limoges, Lyon, Poitiers

**Zone B:** Aix-Marseille, Amiens, Caen, Lille, Nancy-Metz, Nantes, Nice, Orléans-Tours, Reims, Rennes, Rouen, Strasbourg

**Zone C:** Créteil, Montpellier, Paris, Toulouse, Versailles

## FRANCE (CONTINUED)

	Primary education	General secondary education
<b>Total number of academic/school days</b>	36 weeks (including public/religious holidays)  <i>ISCED 1: 162 days (4.5 days/week)<sup>1</sup></i>	36 weeks (including public/religious holidays)  <i>ISCED 24: 162 days (4.5 days/week)<sup>1</sup></i>  <i>ISCED 34: 180 days (5 days/week)<sup>1</sup></i>
<b>Total number of holidays</b>	16 weeks	16 weeks

### Additional notes

<sup>1</sup>- The annual hours of instruction, set by the curriculum for each subject and for each level of education, must be respected regardless of the number of public holidays within a week. **The school year is not set in terms of days but in weeks.** It consists of 36 weeks of work; the public holidays included in the current school year are not deducted. (cf. [Code de l'éducation](#), Article L521-1)

#### Primary education

The school week includes for all students twenty-four hours of instruction, spread over nine half-days.

Instruction time is provided 4,5 days a week (Monday, Tuesday, Thursday and Friday, all day, and on Wednesday morning), with a maximum of 24 hours of instruction per week, 5 1/2 hours of instruction maximum per day and 3 1/2 hours maximum per half-day. Lunchtime break cannot be shorter than one hour and a half.

Since September 2017, by way of derogation (<sup>1</sup>) from this general framework, public primary schools have been allowed to set up 3 other types of organization of the school week and distribute the 24 hours of weekly instruction:

- over 4,5 days (Mon, Tues, Thurs and Fri, all day, and on Saturday morning, instead of Wednesday morning); or
- over 8 half-days which should include 5 mornings. In this case, extra-curricular activities are gathered together in one afternoon; or
- over 4 days (Mon, Tue, Thurs, Fri) – instead of four and a half – as long as instruction time does not exceed six hours per day and three and a half hours per half day. Moreover, it is possible to shorten holidays to compensate for the reduced weekly instruction time.

#### Secondary education

A 4.5-day week (Monday to Friday) is most commonly practiced. At the upper secondary level, students often have school on Saturday morning.

(<sup>1</sup>) Source: Décret n° 2017-1108 du 27 juin 2017 relatif aux dérogations à l'organisation de la semaine scolaire dans les écoles maternelles et élémentaires publiques:  
<https://www.legifrance.gouv.fr/eli/decret/2017/6/27/MENE1716127D/jo/texte>

# GERMANY

## Organisation of school time in primary and general secondary education – 2019/20

<b>Starting date of students' school year</b>	1 August 2019 begin of official school year (for details see table I)
<b>End of students' school year</b>	31 July 2020 end of official school year (for details see table I)
<b>Autumn holidays</b>	3 to 15 days staggered between 30 September and 31 October 2019 (for details see table II)
<b>Christmas/New Year</b>	11 to 16 days staggered between 20 December 2019 and 11 January 2020 (for details see table II)
<b>Winter/Carnival</b>	0 to 13 days staggered between 31 January and 25 February 2020 (for details see table II)
<b>Spring/Easter</b>	6 to 17 days staggered between 2 March and 24 April 2020 (for details see table II)
<b>Third term</b>	0 to 13 days staggered between 18 May and 13 June 2020 (for details see table II)
<b>Summer</b>	6 weeks staggered between 22 June and 12 September 2020 (for details see table I)
<b>Public/religious holidays</b>	Up to 10 days, depending on the <i>Land</i>
<b>Starting date of teachers' school year</b>	1 August 2019 (official date)
<b>End of teachers' school year</b>	31 July 2020 (official date)

Source: Eurydice.

**TABLE I: Specification for starting/end of students' school year and summer holidays**

	<b>Beginning of students' school year 2019/20</b>	<b>End of students' school year 2019/20</b>	<b>Summer holidays 2020</b>
Hamburg	8 August 2019	24 June 2020	25 June – 5 August
Berlin	5 August 2019	24 June 2020	25 June – 7 August
Brandenburg	5 August 2019	24 June 2020	25 June – 8 August
Mecklenburg-Vorpommern / Schleswig-Holstein	12 August 2019	19 June 2020/ 26 June 2020	22 June – 1 August/ 29 June – 8 August
Bremen / Niedersachsen	15 August 2019	15 July 2020	16 July – 26 August
Rheinland-Pfalz / Hessen / Saarland	12 August 2019	3 July 2020	6 July – 14 August
Sachsen / Thüringen	19 August 2019	17 July 2020	20 July – 28/29 August
Sachsen-Anhalt	15 August 2019	15 July 2020	16 July – 26 August
Nordrhein-Westfalen	28 August 2019	26 June 2020	29 June – 11 August
Baden-Württemberg	11 September 2019	29 July 2020	30 July – 12 September
Bayern	10 September 2019	24 July 2020	27 July – 7 September

## GERMANY (CONTINUED)

**TABLE II: Specification of shorter holiday periods**

Land	Autumn 2019	Christmas / New Year 2019/20	Winter 2020	Spring / Easter 2020	3rd term 2020
Baden-Württemberg	28-30 October	23 Dec. - 4 Jan.	–	6-18 April	2-13 June
Bayern	28-31 October	23 Dec. - 4 Jan.	–	24-28 Febr./ 6-18 April	2-13 June
Berlin	4/7-19 October	23 Dec. - 4 Jan.	3-8 February	6-17 April	22 May
Brandenburg	4-18 October	23 Dec. - 3 Jan.	3-8 February	6-17 April	–
Bremen	4-18 October	21 Dec. - 6 Jan.	3-4 February	28 Mar. - 14 April	22 May/2 June
Hamburg	4-18 October	20 Dec. - 3 Jan.	31 January	2-13 March	18-22 May
Hessen	30 Sept. - 12 Oct.	23 Dec. - 11 Jan.	–	6-18 April	–
Mecklenburg-Vorpommern	4-12 October	23 Dec. - 4 Jan.	10-21 February	6-15 April	22/29 May - 2 June
Niedersachsen	4-18 October	23 Dec. - 6 Jan.	3-4 February	30 Mar. - 14 April	22 May/2 June
Nordrhein-Westfalen	14-26 October	23 Dec. - 6 Jan.	–	6-18 April	2 June
Rheinland-Pfalz	30 Sept. - 11 Oct.	23 Dec. - 6 Jan.	17-21 February	9-17 April	–
Saarland	7-18 October	23 Dec. - 3 Jan.	17-25 February	14-24 April	–
Sachsen	14-25 October	21 Dec. - 3 Jan.	10-22 February	10-18 April	22 May
Sachsen-Anhalt	4-11 October	23 Dec. - 4 Jan.	10-14 February	6-11 April	18-30 May
Schleswig-Holstein	4-18 October	23 Dec. - 6 Jan.	–	30 March - 17 April	22 May
Thüringen	7-19 October	21 Dec. - 3 Jan.	10-14 February	6-18 April	22 May

Source: Eurydice.

### Additional notes

In accordance with the *Hamburg Agreement* between the *Länder* on harmonisation in the school system, the school year begins on 1 August and ends on 31 July. The actual beginning and end depend on the dates of the summer holidays which vary from one year to the other.

# GREECE

## Organisation of school time in primary and general secondary education – 2019/20

	Primary education	General secondary education
<b>Starting date of students' school year</b>	11 September 2019	11 September 2019
<b>End of students' school year</b>	15 June 2020	The teaching of subjects is conducted in two periods, called quarters. Lessons end during the last week of May. The actual end date is subject to annual arrangement and it is set by a Ministerial Decision, issued by 30 April each year. The examination period follows. All procedures are completed until 30 June.
<b>Christmas/New Year</b>	2 weeks 24 December 2019 – 7 January 2020	2 weeks 24 December 2019 – 7 January 2020
<b>Spring/Easter</b>	2 weeks 13-26 April 2020	2 weeks 13-26 April 2020
<b>Summer</b>	Around 12 weeks 16 June – 10 September 2020	Around 10 weeks 1 July – 10 September 2020
<b>National/religious holidays</b>	28 October 2019 (National holiday) 17 November 2019 (National school celebration, although Sunday this year) 30 January 2020 (Religious school celebration) 2 March 2020 (Religious holiday) 25 March 2020 (National holiday) 1 May 2020 (Labour Day) 8 June 2020 (Religious holiday) and some local holidays	28 October 2019 (National holiday) 17 November 2019 (National school celebration, although Sunday this year) 30 January 2020 (Religious school celebration) 2 March 2020 (Religious holiday) 25 March 2020 (National holiday) 1 May 2020 (Labour Day) 8 June 2020 (Religious holiday) and some local holidays
<b>Starting date of teachers' school year</b>	2 September 2019	2 September 2019
<b>End of teachers' school year</b>	19 June 2020	30 June 2020

### Additional notes

The official school year for both primary and secondary education lasts from 1 September each year until the 31 August next year (1 September 2019 – 31 August 2020).

At **primary** level, the didactic year lasts from 1 September until 21 June of the following year ([Presidential Decree 79/2017](#) (Government Gazette 109/issue A/1-8-2017): 'Organisation and operation of Pre-primary and Primary Schools').

At **secondary** level, the didactic year lasts from 1 September until 30 June of the following year ([Ministerial Decision 10645/ΓΔ4/23-1-2018](#) (Government Gazette 120/issue B/23-1-2018): 'Registrations, transfers, attendance and issues of organisation of school life in Secondary Education Schools').

For the school year 2019/20, in primary schools, the school days (teaching days) amount approximately to 172 days, whereas in general secondary education the school days (teaching days and exam days) are approximately 183 days.

In primary schools, the holidays (Summer, Christmas, Easter) amount to 16 weeks, whereas in general secondary education they amount to 14 weeks.

# HUNGARY

## Organisation of school time in primary and general secondary education – 2019/20

	Primary and lower secondary education	General upper secondary education
<b>Starting date of students' school year</b>	2 September 2019	2 September 2019
<b>End of students' school year</b>	15 June 2020	15 June 2020
<b>Autumn holidays</b>	28 October – 3 November 2019	28 October – 3 November 2019
<b>Christmas/New Year holidays</b>	23 December 2019 – 5 January 2020	23 December 2019 – 5 January 2020
<b>Spring/Easter holidays</b>	9-14 April 2020	9-14 April 2020
<b>Summer holidays</b>	11 weeks 16 June – 31 August 2020	11 weeks 16 June – 31 August 2020
<b>Public/religious holidays</b>	23 October 2019 (Day of the Hungarian Revolution of 1956) 15 March (Sunday) 2020 (The Day of the Hungarian Revolution of 1848) 1 May 2020 (Labour Day) 1 June 2020 (Whit Monday)	23 October 2019 (Day of the Hungarian Revolution of 1956) 15 March (Sunday) 2020 (The Day of the Hungarian Revolution of 1848) 1 May 2020 (Labour Day) 1 June 2020 (Whit Monday)
<b>Starting date of teachers' school year</b>	Institutional autonomy takes into account the concerning legal provision*.	Institutional autonomy takes into account the concerning legal provision*.
<b>End of teachers' school year</b>	Institutional autonomy takes into account the concerning legal provision*.	Institutional autonomy takes into account the concerning legal provision*.

Source: Eurydice.

### Additional notes

According to the Act on Public Education, the minister responsible for education specifies the schedule of the school year in a ministerial decree. The Act stipulates that the school year starts on the first working day of September every year and finishes on the last working day prior to 16 June.

Thus schools have no autonomy in changing the first and last day of the school year but they have some autonomy in giving extra holidays before or after public holidays or school holidays for practical reasons (e.g. if a public holiday falls on a Thursday, the school may give Friday as holiday) if they provide teaching on a regular resting day (weekend) instead.

In addition to compulsory school days, schools also have six (in basic schools) or seven (in upper secondary general schools) non-teaching days for educational purposes.

Holidays at schools providing minority education may differ from the above described school holidays to celebrate national traditions.

\* Act No. CXC of 2011 Public Education Act, Act No. XXXIII of 1992 on the legal status of public servants and the Government Decree No. 326/2013 stipulate that the holidays of teachers primarily have to be given during the summer holiday. If not all days can be taken during that, the rest has to be provided during the autumn, winter or spring holidays or teaching days. (For teachers the autumn, winter and spring holidays are regarded as workdays without teaching).



## ICELAND

### Organisation of school time in primary and general secondary education – 2019/20

	<b>Primary and lower secondary education</b>	<b>General upper secondary education</b>
<b>Starting date of students' school year</b>	Officially from 20 August but municipalities may decide on a detailed date of school start. For the school year 2019/20, the most common day for school start is 22 August 2019.	Officially as of 18 August each year but each upper secondary school may decide on a detailed date of school start, in consultation with the relevant school council and the school's teachers. For the school year 2019/20, most schools start on 19 August 2019.
<b>End of students' school year</b>	Officially before 10 June but municipalities may decide on a detailed date of school end. For the school year 2019/20, the most common day for end of school date is 5 June 2020.	Officially as of 31 May but each upper secondary school may decide on a detailed date of school end, in consultation with the relevant school council and the school's teachers. For the school year 2019/20, most schools end on during the last days of the working week in May or at the latest on 29 May 2020.
<b>Autumn holidays</b>	A period of 2-3 working days in October 2019, commonly 24, 25 and 28 October 2019.	A period of 2 working days in October 2019.
<b>Christmas/New Year</b>	23 December 2019 – 1 January 2020, including both days.	21 December 2019 – 3 January 2020, including both days.
<b>Winter/Carnival</b>	2 days in February, this school year 28 February and 3 March 2020, including both days	A period of 2-3 working days in February or early March.
<b>Spring/Easter</b>	9-13 April 2020, including both days, a total of three working days plus the weekend	A period of 7 working days in April, normally 6 to 14 April 2020, both days included
<b>Summer</b>	Between 5 June and 20 August 2020	Between 31 May and 18 August 2020
<b>Public/religious holidays</b>	24 December 2019 25 December 2019 26 December 2019 1 January 2020 9 April 2020 10 April 2020 12 April 2020 13 April 2020 23 April 2020 1 May 2010 31 May 2020 (Public holidays outside the official school year: 1 June 2020 17 June 2020 3 August 2020)	24 December 2019 25 December 2019 26 December 2019 1 January 2020 9 April 2020 10 April 2020 12 April 2020 13 April 2020 23 April 2020 1 May 2010 31 May 2020 (Public holidays outside the official school year: 1 June 2020 17 June 2020 3 August 2020)

## ICELAND (CONTINUED)

### Organisation of school time in primary and general secondary education – 2019/20

	Primary and lower secondary education	General upper secondary education
<b>Starting date of teachers' school year</b>	Teachers' school year normally starts 4 working days before the official school start (20 August each year) and in the case of the 2019/20 school year, when school starts 22 August this would be 16 August 2019.	Teachers' school year normally starts 4 working days before the official school start (18 August each year) and in the case of the 2019/20 school year this would be 13 August 2019.
<b>End of teachers' school year</b>	Teachers' school year normally ends 4 working days after the official school end date (10 June) and in the case of the 2019/20 school year when school normally ends of 5 June 2020, this would be 11 June 2020.	Teachers' school year normally ends 4 working days after the official school end date (of 31 May) and in the case of the 2019/20 school year this would be 5 June 2020

#### Additional notes

According to the Icelandic Teachers' Union collective agreement between The Association of Teachers in Primary and Lower Secondary Schools and Icelandic Association of Local Authorities, compulsory school teachers shall have 8 days accumulatively for preparation before the formal school year commences and after formal school year ends. Furthermore, teachers shall have 5 preparation days during the year. Upper secondary school teachers have a total of 4 working days before the beginning and/or the end of the school year. Total of school days for primary and lower secondary education are 180 per school year, thereof 170 in active teaching or examination. A total of 10 days may be distributed to other school activity days such as school commence ceremony, school ending ceremony, parental day, etc. As of the school year 2017/18, the total number of school days for upper secondary education was set to be 180 days of active teaching and examination days.

## IRELAND

### Organisation of school time in primary and general secondary education – 2019/20

	Primary education	General secondary education
<b>Starting date of students' school year</b>	First week of September 2019 <sup>(1)</sup>	Circa 26 August 2019
<b>End of students' school year</b>	End of June 2020 <sup>(2)</sup>	End of State Examinations in June 2020
<b>Autumn holidays</b>	1 week 28 October 2019 – 1 November 2019 (inclusive)	1 week 28 October 2019 – 1 November 2019 (inclusive)
<b>Christmas/New Year</b>	2 weeks 23 December 2019 – 3 January 2020 (inclusive)	2 weeks 23 December 2019 – 3 January 2020 (inclusive)
<b>Winter/Carnival</b>	2 days 20-21 February 2020 <sup>(3)</sup>	1 week 17-21 February 2020 (inclusive)
<b>Spring/Easter</b>	2 weeks 6-17 April 2020 (inclusive)	2 weeks 6-17 April 2020 (inclusive)
<b>Summer</b>	About 9 weeks End of June until week of 1 September 2020	About 12 weeks June, July and most of August 2020
<b>Public/religious holidays</b>	17 March 2020 4 May 2020 1 June 2020 and some religious holidays	17 March 2020 4 May 2020 1 June 2020 and some religious holidays
<b>Starting date of teachers' school year</b>	1 September 2019	1 September 2019
<b>End of teachers' school year</b>	31 August 2020	31 August 2020

Source: Eurydice.

#### Additional notes

##### Primary education

- <sup>(1)</sup> In order to meet the overall requirement of 183 days at primary level, the school year will normally commence during the week in which 1st September falls. The exact date is determined locally at Board of Management level.
- <sup>(2)</sup> School may use their own discretion to determine the precise ending of the school year in June, providing it has met the overall requirement of 183 days.
- <sup>(3)</sup> Primary school may use 3 discretionary days to extend their Winter/Carnival break to an alternative option of a 5 day break.

Circular 0009/2017 sets out the standardised school breaks at primary and post-primary level for the school years 2017/18, 2018/19 and 2019/20.

## **IRELAND (CONTINUED)**

---

The arrangements for standardised closure at primary level (Circular 0009/2017) are agreed without prejudice to closure on specific days, within the overall requirement of 183 days at primary level, dictated by religious observance that is required in schools under patronage of different denominations or faiths. In the absence of an adequate number of discretionary days a school authority may choose to utilise a religious observation day for non-tuition purpose when planning the school year.

The existing arrangements for school breaks may provide some limited flexibility to schools on certain other days outside of the defined periods. The scheduling of such days must not be used to extend or modify the period set out above in respect of mid-term, Christmas and Easter breaks save where a school has been affected by extensive or prolonged school closures or religious observance requirements of a school under a particular patronage makes this necessary.

It was not a requirement of this agreement that the commencement or end of the school year either at primary or post primary level should be standardised.

### **General secondary**

In accordance with Circular M29/95, the minimum number of teaching days per post-primary school will be 167. In addition and in accordance with Circular 0009/2017, holiday periods during the school year have been standardised, i.e. midterm breaks, Christmas and Easter holidays. Traditionally, formal instruction ends in post-primary schools on the Friday preceding the June bank holiday weekend. State examinations normally commence the following Wednesday. In order for schools to meet their requirement to be open for 167 days during 2019/20 school year, it is expected that post-primary schools will be open circa the 26 August 2019.

The above holidays are standardised in accordance with Circular 0009/2017. Since the introduction of the standardised school calendar, many schools which would have traditionally opened on the 1st September are now opening in late August in order to meet their full complement of days.

## ITALY

### Organisation of school time in primary and general secondary education – 2019/20

	Primary education	General secondary education
<b>Starting date of students' school year</b>	Between 5 and 18 September 2019	Between 5 and 18 September 2019
<b>End of students' school year</b>	Between 6 and 16 June 2020	Between 6 and 16 June 2020
<b>Autumn holidays</b>	–	–
<b>Christmas/New Year</b>	13 to 16 days between 21-24 December 2019 and 6-7 January 2020	13 to 16 days between 21-24 December 2019 and 6-7 January 2020
<b>Winter/Carnival</b>	1-7 days in February 2020	1-7 days in February 2020
<b>Spring/Easter</b>	5 days between 9 and 14 April 2020, for all regions	5 days between 9 and 14 April 2020, for all regions
<b>Third term</b>	–	–
<b>Summer</b>	12-14 weeks between June and September 2020	12-14 weeks between June and September 2020
<b>Public/religious holidays</b>	1 November 2019 8 December 2019 25 April 2020 1 May 2020 2 June 2020 (and Saints' days depending on the regions)	1 November 2019 8 December 2019 25 April 2020 1 May 2020 2 June 2020 (and Saints' days depending on the regions)
<b>Starting date of teachers' school year</b>	1 September 2019	1 September 2019
<b>End of teachers' school year</b>	31 August 2020	31 August 2020

Source: Eurydice.

## ITALY (CONTINUED)

Specification of terms for the beginning and the end of the school year 2019/20		
Primary and general secondary education		
	Beginning 2019	End 2020
Abruzzo	16 September	8 June
Alto Adige (Bolzano)	5 September (5-day weeks) 5 September (6-day weeks)	16 June (5-day weeks) 16 June (6-day weeks)
Basilicata	11 September	10 June
Calabria	16 September	9 June
Campania	11 September	6 June
Emilia-Romagna	16 September	6 June
Friuli-Venezia Giulia	12 September	10 June
Lazio	16 September	8 June
Liguria	16 September	10 June
Lombardia	12 September	8 June
Marche	16 September	6 June
Molise	16 September	6 June
Piemonte	9 September	10 June
Puglia	18 September	10 June
Sardegna	16 September	6 June
Sicilia	12 September	6 June
Toscana	16 September	10 June
Trentino (Trento)	12 September	10 June
Umbria	11 September	9 June
Valle d'Aosta	12 September	12 June
Veneto	11 September	6 June

### Additional notes

Schools can adjust the school calendar, established by the Regions, to the PTOF's requirements (the PTOF is the basic document of the cultural and planning identity of each school. It defines every three years the curricular, extra-curricular, educational and organisational projects of each school). Schools can organise in a flexible way the overall and single-subject timetable, provided that lessons spread over a minimum of five days per week and that the prescribed number of hours for the single subjects is complied with. The school year begins between the 1st and the 3rd week of September and finishes between the 1st and the 3rd week of June. The school adaptations of the school time should guarantee at least 200 days of lesson in the school year.

According to school autonomy, schools have up to 5 or 6 days available, which are foreseen for the suspension of educational activities.

# LATVIA

## Organisation of school time in primary and general secondary education – 2019/20

	Integrated primary and lower secondary education	General upper secondary education
<b>Starting date of students' school year</b>	2 September 2019	2 September 2019
<b>End of students' school year</b>	29 May 2020	29 May 2020
<b>Autumn holidays</b>	1 week 21-25 October 2019	1 week 21-25 October 2019
<b>Winter holidays (Christmas/New Year)</b>	2 weeks 23 December 2019 – 3 January 2020	2 weeks 23 December 2019 – 3 January 2020
<b>Spring/Easter</b>	1 week 16-20 March 2020	1 week 16-20 March 2020 23-27 March 2020 (for the 12th class)
<b>Summer</b>	13 weeks 1 June – 31 August 2020	13 weeks 1 June – 31 August 2020
<b>Public/religious holidays</b>	18 November 2019 (Proclamation of the Republic of Latvia) 10-13 April 2020 (Easter) 1 May 2020 (Convocation of the Constituent Assembly of the Republic of Latvia; Labour Day) 4 May 2020 (Restoration of Independence of the Republic of Latvia)	18 November 2019 (Proclamation of the Republic of Latvia) 10-13 April 2020 (Easter) 1 May 2020 (Convocation of the Constituent Assembly of the Republic of Latvia; Labour Day) 4 May 2020 (Restoration of Independence of the Republic of Latvia)
<b>Starting date of teachers' school year</b>	See Additional notes	See Additional notes
<b>End of teachers' school year</b>	See Additional notes	See Additional notes

Source: Eurydice.

### Additional notes

Single structure compulsory education (integrated primary and lower secondary education (*pamatizglītība*)): end of the school year for the 9th class: 12 June 2020.

Upper secondary education: end of the school year for the 12th class: 19 June 2020.

The school year is divided in two semesters: the first from 2 September to 20 December 2019 and the second from 6 January to 29 May 2020 (and to 12 June for the 9th class and 19 June for the 12th class).

Education institutions decide when to carry out an additional 1 week long holidays in the second semester for the 1st class.

Education institutions decide when to carry out a 1 week long project week in the second semester.

Extension of the school year for classes 1-8 and 10-11 may be made if specific circumstances hindering education process arise during the school year (e.g. extreme temperature, strike, emergency situation in school, etc.).

**Holidays (summer 2020):** These are the dates for the official summer holiday period for classes 1-8 and 10-11.

**Public holidays:** When the specific holidays of 18 November (Proclamation of the Republic of Latvia) and 4 May (Restoration of Independence of the Republic of Latvia) fall on Saturday or Sunday, the holiday is transferred to the next working day.

**Teachers:** The teachers' school year concurs fully with students' year, but normally is longer and starts earlier, though the end and the start date is not defined officially. Teachers have the right to receive 8 weeks of paid annual leave in summer.

## LIECHTENSTEIN

### Organisation of school time in primary and general secondary education – 2019/20

	Primary education and general secondary education
<b>Starting date of students' school year</b>	19 August 2019
<b>End of students' school year</b>	3 July 2020
<b>Total number of school days</b>	184 days (39 school weeks excl. holidays)
<b>Autumn holidays</b>	2 weeks 5-20 October 2019
<b>Christmas/New Year</b>	2 weeks 21 December 2019 – 6 January 2020
<b>Winter/Carnival</b>	1 week 22 February – 1 March 2020
<b>Spring/Easter</b>	2.5 weeks 9 April – 26 May 2020
<b>Summer</b>	6 weeks 4 July – 16 August 2020
<b>Public/religious holidays</b>	8 September 2019 – Birth of the Blessed Virgin Marie ( <i>Mariä Geburt</i> ) 1 November 2019 – All Saints Day ( <i>Allerheiligen</i> ) 8 December 2019 – Feast of the Immaculate Conception ( <i>Mariä Empfängnis</i> ) 2 February 2020 – Candlemas ( <i>Maria Lichtmess</i> ) 19 March 2020 – St. Josephs Day ( <i>Josefitag</i> ) 12-13 April 2020 – Easter Sunday/Easter Monday ( <i>Ostern/Ostermontag</i> ) 1 May 2020 – Labour Day ( <i>Tag der Arbeit</i> ) 21-22 May 2020 – Ascension Day ( <i>Auffahrt</i> ) 31 May – 1 June 2020 – Whitsuntide/Whit Monday ( <i>Pfingsten/Pfingsmontag</i> ) 11-12 June 2019 – Corpus Christi ( <i>Fronleichnam</i> )
<b>Starting date of teachers' school year</b>	19 August 2019
<b>End of teachers' school year</b>	3 July 2020

Source: Office of Education Liechtenstein.

Nation School Calendar 2019/20 – 2021/22: [https://www.llv.li/files/sa/schulferienkalender\\_2019-22.pdf](https://www.llv.li/files/sa/schulferienkalender_2019-22.pdf)



## LITHUANIA

### Organisation of school time in primary and general secondary education – 2019/20

	Primary education	General secondary education
<b>Starting date of students' school year</b>	1 September 2019	1 September 2019
<b>End of students' school year</b>	*	**
<b>Autumn holidays</b>	28-31 October 2019	28-31 October 2019
<b>Christmas/New Year</b>	23 December 2019 – 3 January 2020	23 December 2019 – 3 January 2020
<b>Winter/Carnival</b>	17-21 February 2020	17-21 February 2020
<b>Spring/Easter</b>	14-17 April 2020	14-17 April 2020
<b>Summer</b>	***	***
<b>Public/religious holidays</b>	1 November 2019 16 February 2020 11 March 2020 1 May 2020	1 November 2019 16 February 2020 11 March 2020 1 May 2020
<b>Starting date of teachers' school year</b>	Following the general teaching plans and subject to the agreement of the school head and teacher	Following the general teaching plans and subject to the agreement of the school head and teacher
<b>End of teachers' school year</b>	Following the general teaching plans and subject to the agreement of the school head and teacher****	Following the general teaching plans and subject to the agreement of the school head and teacher****

Source: General Teaching Plans of Primary Education Curricula for 2019-2020 and 2020-2021, No V-413, 15 April 2019. General Teaching Plans of Basic and Upper-Secondary Education Curricula for 2019-2020 and 2020-2021, No V-417, 15 April 2019.

#### Additional note

\* The duration of the education process for primary education – 175 days of education.

\*\* The duration of the education process for 5-10 grade students and for the I-III gymnasiums class – 185 days of education, for the pupils of the IV gymnasium class – 163 days of education.

\*\*\* The beginning of summer holidays is determined by the head of the school, in agreement with the school council and the owner of the institution. Summer holidays for students of IV gymnasiums class start after the end of the matura examination session set by the Minister of Education and Science.

\*\*\*\* Since 1 July 2017, the new Labour Code was approved in Lithuania. According to it, the annual amount of leave for teachers is legislated as 40 work days. Normally, it is recommended that teachers take their annual leave during school summer holidays (i.e. teachers' leave is normally determined by the school calendar).

## LUXEMBOURG

### Organisation of school time in primary and general secondary education – 2019/20

	Primary education	General secondary education
<b>Starting date of students' school year</b>	16 September 2020	16 September 2020
<b>End of students' school year</b>	15 July 2020	15 July 2020
<b>Autumn holidays</b>	1 week 26 October – 3 November 2019	1 week 26 October – 3 November 2019
<b>Christmas/New Year</b>	2 weeks 21 December 2019 – 5 January 2020	2 weeks 21 December 2019 – 5 January 2020
<b>Winter/Carnival</b>	1 week 15-23 February 2020	1 week 15-23 February 2020
<b>Spring/Easter</b>	2 weeks 4-19 April 2020	2 weeks 4-19 April 2020
<b>Third term</b>	1 week 30 May – 7 June 2020	1 week 30 May – 7 June 2020
<b>Summer</b>	8 weeks 16 July – 14 September 2020	8 weeks 16 July – 14 September 2020
<b>Public/religious holidays</b>	1 November 2019 (All Saints' Day) 13 April 2020 (Easter Monday) 1 May 2020 (Labour Day) 9 May 2020 (Europe Day) 21 May 2020 (Ascension Day) 1 June 2020 (Whit Monday) 23 June 2020 (National Holiday) 15 August 2020 (Assumption)	1 November 2019 (All Saints' Day) 13 April 2020 (Easter Monday) 1 May 2020 (Labour Day) 9 May 2020 (Europe Day) 21 May 2020 (Ascension Day) 1 June 2020 (Whit Monday) 23 June 2020 (National Holiday) 15 August 2020 (Assumption)
<b>Starting date of teachers' school year</b>	16 September 2019	16 September 2019
<b>End of teachers' school year</b>	15 July 2020	15 July 2020

Total number of school days from 16 September to 15 July: 180 days (weekends not included)

Total number of holidays from 16 September to 15 July: 63 days (the summer break not included)

# MALTA

## Organisation of school time in primary and general secondary education – 2019/20

	Primary education	General secondary education
<b>Starting date of students' school year</b>	25 September 2019	25 September 2019
<b>End of students' school year</b>	26 June 2020	26 June 2020
<b>Autumn holidays</b>	1, 4, 5 November 2019	1, 4, 5 November 2019
<b>Christmas/New Year</b>	23 December 2019 – 6 January 2020	23 December 2019 – 6 January 2020
<b>Winter/Carnival</b>	24, 25 February 2020	24, 25 February 2020
<b>Spring/Easter</b>	8-17 April 2020	8-17 April 2020
<b>Third term</b>	20 April – 26 June 2020	20 April – 26 June 2020
<b>Summer</b>	29 June – 24 September 2020	29 June – 24 September 2020
<b>Public/religious holidays falling on week days</b>	13 December 2019 10 February 2020 19 March 2020 31 March 2020 1 May 2020	13 December 2019 10 February 2020 19 March 2020 31 March 2020 1 May 2020
<b>Starting date of teachers' school year</b>	23 September 2019	23 September 2019
<b>End of teachers' school year</b>	6 July 2020	6 July 2020

### Additional notes

Half-yearly examinations take place from 4 February until 20 February 2020 for pupils in Year 10. During this period annual exams are held for Year 11, the last year of compulsory general secondary education.

The annual examinations for primary school pupils take place from 19 June until 26 June 2020 and from 10 June until 26 June 2020 for secondary school students from Year 7 till Year 10.

Year 6 students in primary schools sit for the End-of-Primary Benchmark Assessments held between the 22 and 29 May 2020.

During the month of June schools are on half-days.

Total number of school days in the primary and general secondary education including exam days is 169 days and total number of holidays during the school year is 29 days.

# MONTENEGRO

## Organisation of school time in primary and general secondary education – 2019/20

	Primary education	General secondary education
<b>Starting date of students' school year</b>	2 September 2019	2 September 2019
<b>End of students' school year</b>	10 June 2020 20 May 2020 (in the final year)	10 June 2020 20 May 2020 (in the final year)
<b>Christmas/New Year/Winter</b>	25-26 December 2019 1-2 January 2020 7-8 January 2020	25-26 December 2019 1-2 January 2020 7-8 January 2020
<b>Winter/Carnival</b>	31 December 2019 – 21 January 2020	31 December 2019 – 21 January 2020
<b>Summer</b>	11 June – 1 September 2020 23 May – 1 September 2020 for students of the final grade	11 June – 1 September 2020 23 May 2020 for students of the final grade  Note: for the students in vocational education who have professional internship (10-15 days), the summer vacation begins after the end of the internship.
<b>Public holidays (national/religious/occasional)</b>	1-2 January 2020 (New Year's Day) 1-2 May 2020 (International Labour Day) 21-22 May 2020 (Independence Day) 13-15 July 2020 (Statehood Day)	1-2 January 2020 (New Year's Day) 1-2 May 2020 (International Labour Day) 21-22 May 2020 (Independence Day) 13-15 July 2020 (Statehood Day)
<b>Starting date of teachers' school year</b>	12 August 2019	12 August 2019
<b>End of teachers' school year</b>	5 July 2019	5 July 2019

### Additional notes

Total number of teaching days for students of primary and secondary school is 182, while for the final year students of primary and secondary school total number of teaching days is 169.

In accordance with **Law on National and Other Holidays** (Official Gazette of the Republic of Montenegro, no 27/2007 and Official Gazette of Montenegro, no 36/2013), national holidays in Montenegro include: 21 May – Independence Day and 13 July – Statehood Day.

Holidays in Montenegro are also: 1 January – New Year and 1 May – Labour Day.

National and other holidays are celebrated for two days, on the day of the holiday and the day that follows.

Holidays are non-working days.

If a holiday falls on Sunday, the following two days are non-working days.

If the second day of the holiday falls on Sunday, the following first day is a non-working day.

**Religious holidays are non-working days.**

Source: Eurydice.

## THE NETHERLANDS

### Organisation of school time in primary and general secondary education – 2019/20

	Primary education	General secondary education
<b>Starting date of students' school year</b>	Northern region: 25 August 2019 Central region: 1 September 2019 Southern region: 18 August 2019	Northern region: 25 August 2019 Central region: 1 September 2019 Southern region: 18 August 2019
<b>End of students' school year</b>	Northern region: 4 July 2020 Central region: 18 July 2020 Southern region: 11 July 2020	Northern region: 4 July 2020 Central region: 18 July 2020 Southern region: 11 July 2020
<b>Autumn holidays*</b>	Northern region: 19-27 October 2019 Central region: 19-27 October 2019 Southern region: 12 -20 October 2019	Northern region: 19-27 October 2019 Central region: 19-27 October 2019 Southern region: 12-20 October 2019
<b>Christmas/New Year holidays</b>	21 December 2019 to 5 January 2020	21 December 2019 to 5 January 2020
<b>Winter/Carnival*</b> (Spring Holiday or Crocus Holiday)	Northern region: 15-23 February 2020 Central region: 22 February to 1 March 2020 Southern region: 22 February to 1 March 2020	Northern region: 15-23 February 2020 Central region: 22 February to 1 March 2020 Southern region: 22 February to 1 March 2020
<b>Spring/Easter*</b> (May Holiday)	25 April – 3 May 2020	25 April – 3 May 2020
<b>Summer</b>	Northern region: 4 July – 16 August 2020 Central region: 18 July – 30 August 2020 Southern region: 11 July – 23 August 2020	Northern region: 4 July – 16 August 2020 Central region: 18 July – 30 August 2020 Southern region: 11 July – 23 August 2020
<b>Public holidays (national/religious/occasional)</b>	22 April 2020 (Easter Monday) 27 April 2020 (King's Birthday) 5 May 2020 (Liberation day) 30 May 2020 (Ascension Day) 10 June 2020 (Whit Monday)	22 April 2020 (Easter Monday) 27 April 2020 (King's Birthday) 5 May 2020 (Liberation day) 30 May 2020 (Ascension Day) 10 June 2020 (Whit Monday)
<b>Starting date of teachers' school year</b>	See Additional notes	See Additional notes
<b>End of teachers' school year</b>	See Additional notes	See Additional notes

# THE NETHERLANDS (CONTINUED)

---

## Additional notes

The school year officially runs from 1 August to 31 July of the following year. The start and end of the school year of the individual schools is according to the region (Northern, Central and Southern region).

Dates for the **summer holidays** are decided by the Ministry of Education, Culture and Science; the holiday period is staggered over 3 regions (compulsory dates for all schools); also dates for **Christmas holidays** and **May holidays (one week)** are decided by the Ministry; other holidays are recommended by the Ministry. The dates of the autumn and spring holidays are decided by the competent authority of the school (school board), although the Ministry does publish advisory dates.

A balanced distribution of teaching time is important in the Netherlands. Schools have the opportunity to deviate from the recommended data, but they have to take into account the wishes and expectations of the parents/caregivers. The Primary Education Act requires schools to provide at least 7 520 teaching hours over the eight years that children attend school.

- In the Netherlands Carnival holiday is called Spring Holiday or Crocus Holiday
- If the recommended period for the Spring Holiday does not fit with Carnival week; it can be expected that schools, especially in the Southern areas of the Netherlands, will not follow the recommendations and will close for Carnival.

The **teachers'** school year is similar to the students' school year. However, it is at the school's discretion to decide whether teachers are expected to end or start later (in order to attend meetings, for preparation of timetable, other non-teaching activities, etc.)

## School days 2019/20

The Primary Education Act requires schools to provide at least 7520 teaching hours over the eight years that children attend school. That's an average of 940 hours per year. It is not really possible to provide a number of school days, because schools are free to decide this (but they have to meet the 7520 teaching hours over eight years). There are differences between schools, it is up to the schools autonomy.

For secondary education the amount of teaching hours is as follows:

- 3700 hours for VMBO (over 4 years)
- 4700 hours for HAVO (over 5 years)
- 5700 hours for VWO (over 6 years)

Schools can choose how they organize their curriculum. As long as each student has the opportunity to follow a program that meets the statutory hours norm. And as long as students receive at least 189 days a year teaching (school days).

## Holidays 2019/20

Secondary education: Per school year there is a maximum of up to 71 free days of school: 55 holidays, 4 public holidays and 12 rostered days off.

So there is also a lot of autonomy for schools.

## NORTH MACEDONIA

### Organisation of school time in primary and general secondary education – 2019/20

	Primary education	General secondary education
<b>Starting date of students' school year</b>	2 September 2019	2 September 2019
<b>End of students' school year</b>	10 June 2020	*) 10 June 2020
<b>Christmas/New Year</b>	1-20 January 2020	1-20 January 2020
<b>Spring/Easter</b>	17-20 April 2020	17-20 April 2020
<b>Third term</b>	12-23 June 2020: Additional classes for students with low attainment in primary schools 17-21 August 2020: Preliminary classes for students who will take remedial exams or exams for faster progress	12-19 June 2020: Additional classes for students with low attainment  10-14 August 2020: Preliminary classes for students who will take remedial exams or exams for faster progress
<b>Summer</b>	11 June – 31 August 2020	11 June – 31 August 2020
<b>Public holidays (national/religious/occasional)</b>	8 September 2019 (Independence Day) 11 October 2019 (Uprising Day) 23 October 2019 (Day of the Revolutionary Struggle) 8 December 2019 (St. Clement Day) 17-20 April 2020 (Orthodox Easter) 1 May 2020 (Labour Day) 24 May 2020 (St. Cyril and Methodius Day) 24 May 2020 Ramadan	8 September 2019 (Independence Day) 11 October 2019 (Uprising Day) 23 October 2019 (Day of the Revolutionary Struggle) 8 December 2019 (St. Clement Day) 17-20 April 2020 (Orthodox Easter) 1 May 2020 (Labour Day) 24 May 2020 (St. Cyril and Methodius Day) 24 May 2020 Ramadan
<b>Starting date of teachers' school year</b>	1 September 2019	1 September 2019
<b>End of teachers' school year</b>	31 August 2020	31 August 2020

Source: Eurydice.

\*) The end of the school year for the fourth grade students in the general secondary schools, third and fourth grade students in vocational secondary schools, and the students of the fourth grade in the artistic vocational schools will be 19 May 2020.

## NORWAY

### Organisation of school time in primary and general secondary education – 2019/20

	<b>Primary education</b> See Additional note 1	<b>General secondary education</b> See Additional note 1
<b>Starting date of students' school year</b>	Between 19 and 23 August 2019	Between 19 and 23 August 2019
<b>End of students' school year</b>	19 June 2020	19 June 2020
<b>Autumn holidays</b>	1 week (some only 2-3 days) between 30 September – 18 October 2019 (week 40, 41 or 42)	1 week (some only 2-3 days) between 30 September – 18 October 2019 (week 40, 41 or 42)
<b>Christmas/New Year</b>	Around 2 weeks between 20 December 2019 until week 1 in January 2020	Around 2 weeks between 20 December 2019 until week 1 in January 2020
<b>Winter/Carnival</b>	1 week between 10 and 28 February 2020 (Week 7, 8 or 9)	1 week between 10 and 28 February 2020 (Week 7, 8 or 9)
<b>Spring/Easter</b>	Between 6-17 April 2020	Between 6-17 April 2020
<b>Third term</b>	–	–
<b>Summer</b>	Around 8 weeks between 22 June and 21 August 2020	Around 8 weeks between 22 June and 21 August 2020
<b>Public/religious holidays</b>	1 May 2020 (Labour Day) 17 May 2020 (National Day) 21 May 2020 (Ascension Day) 1 June 2020 (White Monday)	1 May 2020 (Labour Day) 17 May 2020 (National Day) 21 May 2020 (Ascension Day) 1 June 2020 (White Monday)
<b>Starting date of teachers' school year</b>	See Additional note 2.	See Additional note 2.
<b>End of teachers' school year</b>	See Additional note 2.	See Additional note 2.

#### Additional notes

**Note 1:** According to The Education Act § 2.2 (primary and lower secondary schools) and 2.3 (upper secondary schools): The municipality/county issues regulations concerning school days and holidays for the pupils during the school year. These regulations shall be adapted to national tests and examinations.

The time allocated to teaching in school shall not be less than 38 school weeks within a framework of 45 consecutive weeks and 190 days (most common) during the school year.

**Note 2:** The teachers must work minimum 6 days more than the pupil's school year, for planning, evaluation, competence development, cooperation with colleagues, e.g.

Teacher working time is negotiated between teacher organisations and the organisation of local government (KS.no) and is described in a common agreement.

<https://www.ks.no/contentassets/6dbd7044513c47e195a92aaf369d7b82/sfs-2213---undervisningspersonalet-i-kommunal-og-fylkeskommunal-grunnsopplaring.pdf>



# POLAND

## Organisation of school time in primary and general secondary education – 2019/20

	Primary education	General secondary education
<b>Starting date of students' school year</b>	2 September 2019	2 September 2019
<b>End of students' school year</b>	26 June 2020	26 June 2020
<b>Autumn holidays</b>	–	–
<b>Christmas/New Year</b>	23-31 December 2019	23-31 December 2019
<b>Winter</b>	<p>2 weeks as specified for the following regions:  <b>13-26 January 2020</b>                      lubelskie                      łódzkie                      podkarpackie                      pomorskie                      śląskie</p> <p><b>20 January – 2 February 2020</b>                      podlaskie                      warmińsko-mazurskie</p> <p><b>27 January – 9 February 2020</b>                      kujawsko-pomorskie                      lubuskie                      małopolskie                      świętokrzyskie                      wielkopolskie</p> <p><b>10-23 February 2020</b>                      dolnośląskie                      mazowieckie                      opolskie                      zachodniopomorskie</p>	<p>2 weeks as specified for the following regions:  <b>13-26 January 2020</b>                      lubelskie                      łódzkie                      podkarpackie                      pomorskie                      śląskie</p> <p><b>20 January – 2 February 2020</b>                      podlaskie                      warmińsko-mazurskie</p> <p><b>27 January – 9 February 2020</b>                      kujawsko-pomorskie                      lubuskie                      małopolskie                      świętokrzyskie                      wielkopolskie</p> <p><b>10-23 February 2020</b>                      dolnośląskie                      mazowieckie                      opolskie                      zachodniopomorskie</p>
<b>Spring/Easter</b>	9-14 April 2020	9-14 April 2020
<b>Third term</b>	–	–
<b>Summer</b>	27 June – 31 August 2020	27 June – 31 August 2020
<b>Public/religious holidays</b>	1, 11 November 2019 1, 6 January 2020 1 May 2020 11 June 2020	1, 11 November 2019 1, 6 January 2020 1 May 2020 11 June 2020
<b>Starting date of teachers' school year</b>	2 September 2019	2 September 2019
<b>End of teachers' school year</b>	26 June 2020	26 June 2020

Source: Eurydice.

### Additional notes

In addition, the school head has the possibility to determine some extra days off (e.g. 8 for primary, 10 for upper secondary schools) that may be devoted to external tests and exams and/or religious festivals not being registered as official public holidays.

## PORTUGAL

### Organisation of school time in primary and general secondary education – 2019/20

	Primary education	General secondary education
<b>Starting date of students' school year</b>	Between 10 and 13 September 2019	Between 10 and 13 September 2019
<b>End of students' school year*</b>	9 June 2020 – grades 5 and 6 19 June 2020 – grades 1 to 4	4 June 2020 – grades 9, 11 and 12 9 June 2020 – grades 7, 8 and 10
<b>First term*</b>	10/13 September – 17 December 2019	10/13 September – 17 December 2019
<b>Christmas/New Year</b>	18 December 2019 – 3 January 2020	18 December 2019 – 3 January 2020
<b>Second term</b>	6 January – 27 March 2020	6 January – 27 March 2020
<b>Winter/Carnival</b>	24 to 26 February 2020	24 to 26 February 20
<b>Spring/Easter</b>	30 March to 13 April 2020	30 March to 13 April 2020
<b>Third term*</b>	14 April 2020 – 9 June 2020 for grades 5 and 6 19 June 2020 for grades 1 to 4	14 April 2020 – 4 June 2020 for grades 9, 11 and 12 9 June 2020 for grades 7, 8 and 10
<b>Summer**</b>	About 12-13 weeks	About 13-14 weeks
<b>Public/religious holidays</b>	1 November 2019 25 April 2020 1 May 2020 10 June 2020 11 June 2020	1 November 2019 25 April 2020 1 May 2020 10 June 2020 11 June 2020
<b>Starting date of teachers' school year</b>	1 September	1 September
<b>End of teachers' school year***</b>	See Additional notes	See Additional notes

Source: Eurydice.

#### Additional notes

The total number of instruction days varies between 161 and 173 days.

\*Due to new legislation that grants further autonomy and flexibility to schools in terms of curricular organization (Portaria n.º 181/2019, from 6 November 2019), in 2019/20 schools will be allowed to structure their school time in two semesters and not in three terms. Schools that choose to do so will still be obliged to follow the central recommendations for number of school days, dates of holidays and for exams, as well as to fulfil the number of hours indicated for each grade.

\*\* National exams occur until the end of July.

\*\*\* Teachers have the right to take summer holidays between the end of pupils' school year and the beginning of the following school year.

## ROMANIA

### Organisation of school time in primary and general secondary education – 2019/20

	Primary education	General secondary education
<b>Starting date of students' school year</b>	9 September 2019	9 September 2019
<b>End of students' school year</b>	12 June 2020	12 June 2020
<b>Autumn holidays</b>	26 October – 3 November 2019	–
<b>Christmas/New Year Winter/Carnival</b>	21 December 2019 – 12 January 2020	21 December 2019 – 12 January 2020
<b>Spring/Easter</b>	4-21 April 2020	4-21 April 2020
<b>Summer</b>	13 June 2020 until the date from September 2020 when courses will begin in the school year 2020/21	13 June 2020 until the date from September 2020 when courses will begin in the school year 2020/21
<b>Public/religious holidays</b>	24 January 2020 1 May 2020 1 June 2020	24 January 2020 1 May 2020 1 June 2020
<b>Starting date of teachers' school year</b>	1 September 2019	1 September 2019
<b>End of teachers' school year</b>	31 August 2020	31 August 2020

Source: Eurydice.

	Primary education	General secondary education
<b>Total number of school weeks (including public/religious holidays)</b>	35 weeks of courses	35 weeks of courses
• number of school weeks – first semester	15 weeks of courses	15 weeks of courses
• number of school weeks – second semester	20 weeks of courses	20 weeks of courses

#### Additional notes

1. The schools and the School Inspectorates will mark with specific events the following days:

- 5 October 2019 = World Teachers' Day
- 5 June 2020 = Primary Teacher's Day

2. One week (5 consecutive working days), from 7 October 2019 until 29 May 2020, is dedicated to extracurricular and extra-school activities, within the National Programme *Other kind of school (Școala altfel)*, with a specific timetable.

3. In exceptional situations, depending on the local climatic conditions and school's specificity, the organisation of the school year can be modified at the request of schools, approved by the regional education authorities (County School Inspectorate).

## SERBIA

### Organisation of school time in primary and general secondary education – 2019/20

	Primary and lower secondary education (primary school)	Upper secondary education (secondary school)
Starting date of students' school year	2 September 2019	
End of students' school year	Final (8th) grade: 2 June 2020 Other grades: 16 June 2020	Final (4th) grade in grammar schools: 22 May 2020 Final (3rd or 4th) grade in vocational secondary schools: 29 May 2020 Other grades: 19 June 2020
Autumn holidays	n/a	n/a
Christmas/New Year	30 December 2019 – 7 January 2020	
Winter/Carnival	3-17 February 2020	3-14 February 2020
Spring/Easter	13-20 April 2020	15-20 April 2020
Summer	17 June – 31 August 2020	22 June – 31 August 2020
Public/religious holidays	<p>21 October 2019 – public (working) holiday (Monday)            11 November 2019 – national holiday (Monday)            1-2 January 2020 – New Year holiday            7 January 2020 – religious holiday (Christmas for Orthodox Christians – Monday)            27 January 2020 – religious (working) holiday (St Sava's Day/all schools Saint patron's day, Monday)            15-16-17 February 2020 – national holiday (on Saturday and Sunday)            17-20 April 2020 – religious holiday (Easter for Orthodox Christians)            22 April 2020 – public (working) holiday (Wednesday)            1-2 May 2020 – national holiday            9 May 2020 – public (working) holiday (Saturday)            28 June 2020 – public (working) holiday (Sunday)</p> <p><i>Orthodox Christians are also entitled to one day off for the saint patron's day (so called Slava).</i></p> <p><b>Note</b>  <i>In addition to the religious holidays mentioned above which are related to the majority Orthodox Christians religious community, the members of other large religious communities in the country are entitled to have non-working days for their most important religious holidays:</i></p> <ul style="list-style-type: none"> <li>• Islam religious community – 11 August 2019 (Curban Bayrami) and 24 May 2020 (Ramadan)</li> <li>• Jewish religious community – 18 October 2019 (Yom Kippur)</li> <li>• Catholic and Protestant religious community – 25 December 2019 (Christmas) and 10-13 April 2019 (Easter)</li> </ul>	
Starting date of teachers' school year	Exact starting date of teachers' school year is determined at institutional (school) level. As required at central level, teachers have vacation days as any other employees (minimum is 20 days per year for teachers entering the profession), which they have to use during the school holidays. Teachers usually start the school year a couple of weeks before students (mid-August).	
End of teachers' school year	Exact end date of teachers' school year is determined at institutional (school) level. As required at central level, teachers have vacation days as any other employees (minimum is 20 days per year for teachers entering the profession), which they have to use during the school holidays. Teachers usually end the school year several weeks after students (mid-July).	

Source: Eurydice.

## SERBIA (CONTINUED)

---

### Additional notes

The Ministry of Education, Science and Technological Development of the Republic of Serbia issues the Regulations on school calendar for primary and secondary education each year for the forthcoming school year. The links to the original documents published on the Ministry webpage (in Serbian):

<http://www.mpn.gov.rs/wp-content/uploads/2019/06/Pravilnik-o-kalendaru-obrazovno-vaspitnog-rada-osnovnih-skola-za-skolsku-2019-20.-godinu-OŠ.docx>

<http://www.mpn.gov.rs/wp-content/uploads/2019/06/Tabelarni-pregled-kalendar-a-za-OŠ-RS-1920-17-04-19-prva-varijanta-2.pdf>

<http://www.mpn.gov.rs/wp-content/uploads/2019/05/PRAVILNIK.docx>

<http://www.mpn.gov.rs/wp-content/uploads/2019/05/Tabelarni-pregled.pdf>

Final grade students in both primary and secondary education finish the school year earlier in order to prepare for final and entrance exams.

Primary and lower secondary education (primary school): the school calendar 2019/20 for grades 1 to 7 has a total of 36 working weeks (180 school working days). School calendar for the 8th (final) grade comprised 34 working weeks (170 school working days).

Upper secondary education (secondary school): in general upper secondary education, there are 37 working weeks (185 school working days) in grades 1 to 3, and 33 working weeks (165 school working days) in the final (4th) grade. In vocational upper secondary education, the calendar for all grades except the final comprised 37 working weeks (185 school working days), while the final grade's calendar (3rd or 4th) consists of 34 working weeks (170 school working days).

Holidays can be national (which are always non-working), public and religious (working or non-working). All in all, according to the school calendar, there are 11 holidays. In addition, both students and education staff who belong to different religious communities are allowed to be absent from school during religious holidays specific for their community (enumerated above).

## SLOVAKIA

### Organisation of school time in primary and general secondary education – 2019/20

	Primary education	General secondary education
<b>Starting date of students' school year</b>	2 September 2019	2 September 2019
<b>End of students' school year</b>	30 June 2020	30 June 2020
<b>Autumn holidays</b>	30-31 October 2019	30-31 October 2019
<b>Christmas/New Year</b>	23 December 2019 – 7 January 2020	23 December 2019 – 7 January 2020
<b>Winter/Carnival</b>	3 February 2020 and then according to regions: 17-21 February 2020: Bratislava, Nitra, Trnava 24-28 February 2020: Banská Bystrica, Žilina, Trenčín 2-6 March 2020: Košice, Prešov	3 February 2020 and then according to regions: 17-21 February 2020: Bratislava, Nitra, Trnava 24-28 February 2020: Banská Bystrica, Žilina, Trenčín 2-6 March 2020: Košice, Prešov
<b>Spring/Easter</b>	Easter holidays 9-14 April 2020	Easter holidays 9-14 April 2020
<b>Summer</b>	1 July – 31 August 2020	1 July – 31 August 2020
<b>Public/religious holidays</b>	1 September 2019 15 September 2019 1 November 2019 17 November 2019 24-26 December 2019 1 January 2020 6 January 2020 10-13 April 2020 (Easter) 1 May 2020 8 May 2020 5 July 2020 29 August 2020	1 September 2019 15 September 2019 1 November 2019 17 November 2019 24-26 December 2019 1 January 2020 6 January 2020 10-13 April 2020 (Easter) 1 May 2020 8 May 2020 5 July 2020 29 August 2020
<b>Starting date of teachers' school year</b>	Usually one week before the beginning of the school year	Usually one week before the beginning of the school year
<b>End of teachers' school year</b>	Usually, one week after summer holidays begin	Usually, one week after summer holidays begin

Source: Eurydice.

#### Additional notes

Official school year lasts from 1st September to 31 August. The 1st September is a public holiday. If 2 September falls on a Friday, Saturday or Sunday starting date of school year is next Monday.

Total number of school/academic days: 190 days

Total number of holidays: 95 days (includes 61 working days, 24 weekends, 10 public/religious holidays)

According to the Labour Code, teachers and school heads at primary and secondary levels have 8 weeks of holidays per calendar year. They take it during the holidays. Usually, teachers work one week after beginning of summer holidays and one week before the beginning of the school year.

## SLOVENIA

### Organisation of school time in single structure education and general upper secondary education – 2019/20

	Single structure education	General upper secondary education
<b>Starting date of students' school year</b>	2 September 2019	2 September 2019
<b>End of students' school year</b>	24 June 2020 15 June 2020 (final grade)	24 June 2020 22 May 2020 (final grade)
<b>Autumn holidays</b>	1 week 28 October – 3 November 2019	1 week 28 October – 3 November 2019
<b>Christmas/New Year</b>	1 week 25 December 2019 – 2 January 2020	1 week 25 December 2019 – 2 January 2020
<b>Prešeren Day – Slovenian Cultural Holiday</b>	8 February 2020	8 February 2020
<b>Winter/Carnival</b>	1 week 17-23 February 2020 (Western region) 24 February – 1 March 2020 (Eastern region)	1 week 17-23 February 2020 (Western region) 24 February – 1 March 2020 (Eastern region)
<b>Spring holidays</b>	1 week 27 April – 3 May 2020	1 week 27 April – 3 May 2020
<b>Summer holidays</b>	10 weeks 25 June – 31 August 2020	10 weeks 25 June – 31 August 2020
<b>Public/religious holidays</b>	13 April 2020 (Easter Monday)	13 April 2020 (Easter Monday)
<b>Starting date of teachers' school year</b>	10-15 days before students start school	10-15 days before students start school
<b>End of teachers' school year</b>	Beginning to mid-July 2020	Beginning to mid-July 2020

Source: Eurydice.

#### Additional notes

Slovenia has a single structure compulsory school of nine years.

For pupils and upper secondary students, the school year officially begins on 1st September and ends on 31 August, however, the lessons end in June.

For teachers, the school year begins 10 to 15 days before the students start school, i.e. mid-August and ends in the beginning or mid-July. The exact duration depends on the days of annual leave allocated to an individual (22 to 35 days) and tasks and obligations appointed by the school head.

## SPAIN

### Organisation of school time in primary and general secondary education – 2019/20 <sup>(1, 2)</sup>

	Primary education	General secondary education
<b>Starting date of students' school year</b>	Between 4 and 12 September 2019	Between 5 and 18 September 2019
<b>End of students' school year</b>	Between 17 and 25 June 2020	Between 16 and 25 June <sup>(3)</sup> 2020
<b>Christmas/New Year</b>	At least 15 days between 23 December 2019 and 7 January 2020	At least 15 days between 23 December 2019 and 7 January 2020
<b>Winter/Carnival</b>	Between 1 and 5 days (depending on the Autonomous Community) starting on 21 or 24 February 2020. Some choose 28 February <sup>(4)</sup>	Between 1 and 5 days (depending on the Autonomous Community) starting on 21 or 24 February 2020. Some choose 28 February <sup>(4)</sup>
<b>Spring/Easter</b>	Normally between 5 and 7 teaching days in the period between 3 and 17 April 2020	Normally between 5 and 7 teaching days in the period between 3 and 17 April 2020
<b>Summer</b>	Between 11 and 12 weeks from no earlier than mid-June and no later than mid-September	Between 11 and 12 weeks from no earlier than mid-June and no later than mid-September
<b>Public/religious holidays</b>	At least, 6 days <sup>(5)</sup>	At least, 6 days <sup>(5)</sup>
<b>Starting date of teachers' school year</b>	2 September 2019	2 September 2019
<b>End of teachers' school year</b>	30 June 2020	30 June 2020 <sup>(6)</sup>

#### Additional notes

<sup>(1)</sup> Dates vary according to the different Autonomous Communities, see the table below.

<sup>(2)</sup> The total minimum number of school days is 175 in compulsory education in all Autonomous Communities, although there are some additional days in several Autonomous Communities.

<sup>(3)</sup> In the last year of post-compulsory general upper secondary education, classes usually finish from two and a half to four and a half weeks earlier than in the other stages. This time is meant for preparing for entrance examinations to universities and the final assessment of *Bachillerato*.

<sup>(4)</sup> The allocation of days for Carnival will be as follows: Autonomous Communities of Illes Balears, La Rioja and Comunidad de Madrid, one day; Castilla-La Mancha and Extremadura, two days; Andalucía, Principado de Asturias, Comunidad de Castilla y León and Galicia, three days; Cantabria, five days. There is a free choice of days off in those Autonomous Communities where there is no allocation of days for Carnival.

<sup>(5)</sup> There is a total number of 14 days, out of which 8 are common throughout the country, 4 to be set by the Autonomous Communities and 2 decided at the local level. Two out of the 8 days common throughout the country are on a weekend and the Autonomous Communities are free to decide whether they replace them for another day. Besides, 3 of these public holidays are already allocated in Christmas, 2 of them, in Easter and another one in August. This results in the total number of public holidays being actually 6 per Autonomous Community.

Besides, some Autonomous Communities allow schools to choose some days as non-teaching days. For instance, there is one day in País Vasco, two days in Illes Balears, three days in Cataluña, four days in Canarias and up to five days in La Rioja.

<sup>(6)</sup> The management team of schools must stay in school until 31 July.



## SPAIN (CONTINUED)

### Specification of terms for the starting and the end of students' school year 2019/20 in the different Autonomous Communities

	Primary education		General secondary education <sup>(1)</sup>	
	Beginning (2019)	End (2020)	Beginning (2019)	End (2020)
Andalucía	10 September	22 June	16 September	23 June
Aragón	10 September	19 June	13 September	23 June
Principado de Asturias	10 September	18 June	13 September	23 June
Illes Balears	11 September	19 June	11 September	19 June
Canarias	9 September	19 June	11 September	19 June
Cantabria <sup>(2)</sup>	9 September	23 June	11 September	25 June
Comunidad de Castilla y León	9 September	23 June	16 September	23 June
Castilla-La Mancha	9 September	18 June	12 September	23 June
Cataluña	12 September	20 June	12 September	20 June
Ceuta	10 September	22 June	10 September	22 June
Extremadura	12 September	17 June	12-13 September	17 June
Galicia	11 September	19 June	16 September	19 June
La Rioja	6 September	22 June	9 September	23 June
Comunidad de Madrid	9 September	19 June	10 September	23 June
Melilla	10 September	22 June	10 September	22 June
Región de Murcia <sup>(3)</sup>	Between 6 and 10 September	Between 19 and 25 June	Between 12 and 18 September	Between 16 and 24 June
Comunidad Foral de Navarra <sup>(4)</sup>	Not before 4 September	No later than 19 June	Not before 5 September	No later than 19 June
País Vasco <sup>(4)</sup>	Not before 9 September	No later than 19 June	Not before 9 September	No later than 19 June
Comunidad Valenciana	9 September	18 June	9 September	16 June

#### Additional notes

<sup>(1)</sup> Please, see note <sup>(3)</sup> above.

<sup>(2)</sup> In the Autonomous Community of Cantabria, the school calendar follows a special pattern which differs from the rest of the country. There is a break of one week in October (28 Oct – 1 Nov) and another break of 5 days at the end of February (24-28 Feb). Easter and Christmas are similar to the rest of Autonomous Communities.

<sup>(3)</sup> In the Autonomous Community of Región de Murcia, the beginning and the ending periods vary according to municipalities. Consequently, there is a range of days for such municipalities to establish their own starting and ending dates of the school year in the different levels of education.

<sup>(4)</sup> In the Autonomous Communities of Navarra and País Vasco, schools are free to establish their own calendar taking into account the final starting and ending dates established by the educational authorities.

## SWEDEN

### Organisation of school time in compulsory education (*grundskola*) and in general upper secondary education (*gymnasieskola*) – 2019/20

	Single structure compulsory education ( <i>grundskola</i> )	General upper secondary education ( <i>gymnasieskola</i> )
<b>Starting date of students' school year</b>	Late in August	Late in August
<b>End of students' school year</b>	Mid-June	Mid-June
According to the School Ordinance and the Upper Secondary School Ordinance, a school year consists of at least 178 school days and at least 12 holidays – the exact dates vary on regional and municipality level. In addition to the school days and the holidays, schools are able to conduct five in-service training days (at most) for the staff.		
<b>Autumn holidays</b>	28 October – 1 November 2019	28 October – 1 November 2019
<b>Christmas/New Year</b>	Starts 18-20 December 2019 Ends 7-13 January 2020	Starts 18-20 December 2019 Ends 7-13 January 2020
<b>Winter/Carnival</b>	1 week between 10 February – 6 March 2020	1 week between 10 February – 6 March 2020
<b>Spring/Easter</b>	1 week between 30 March – 7 April 2020	1 week between 30 March – 17 April 2020
<b>Summer</b>	About 10 weeks	About 10 weeks
<b>Public/religious holidays</b>	10 April 2020 (Good Friday) 13 April 2020 (Easter Monday) 1 May 2020 (Labour Day) 21 May 2020 (Ascension Day) 6 June 2020 (National Day)	10 April 2020 (Good Friday) 13 April 2020 (Easter Monday) 1 May 2020 (Labour Day) 21 May 2020 (Ascension Day) 6 June 2020 (National Day)
<b>Starting date of teachers' school year</b>	Mid-August	Mid-August
<b>End of teachers' school year</b>	Mid-June	Mid-June

Source: Eurydice.

#### Additional notes

Sweden has a single structure compulsory school (10 years) with no differences between stages. Starting and finishing dates vary on regional and municipality levels, dates here are indicative.

Teachers usually start their work earlier for planning etc. Continuous professional development (CPD) is the responsibility of the employer and it can take place when the pupils are in school or not.

## SWITZERLAND

### Organisation of school time in primary and general secondary education – 2019/20

	Primary education	General secondary education
<b>Starting date of students' school year</b>	Staggered between 12 August and 2 September 2019	Staggered between 12 August and 2 September 2019
<b>End of students' school year</b>	Staggered between 19 June and 17 July 2020	Staggered between 19 June and 17 July 2020
<b>Autumn holidays</b>	Between 1 and 3 weeks staggered between 21 September and 26 October 2019	Between 1 and 3 weeks staggered between 21 September and 26 October 2019
<b>Christmas/New Year</b>	Between 1.5 and 2 weeks staggered between 21 December 2019 and 6 January 2020	Between 1.5 and 2 weeks staggered between 21 December 2019 and 6 January 2020
<b>Winter/Carnival</b>	Between 1 and 2 weeks staggered between 6 January and 8 March 2020	Between 1 and 2 weeks staggered between 6 January and 8 March 2020
<b>Spring/Easter</b>	Between 1 and 3 weeks staggered between 28 March and 17 May 2020	Between 1 and 2 weeks staggered between 28 March and 10 May 2020
<b>Third term</b>	–	–
<b>Summer</b>	Between 5 and 10 weeks staggered between 20 June and 30 August 2020	Between 5 and 10 weeks staggered between 20 June and 30 August 2020
<b>Public/religious holidays</b>	21 May 2020 (Ascension Day) 1 June 2020 (Whit Monday)	21 May 2020 (Ascension Day) 1 June 2020 (Whit Monday)
<b>Starting date of teachers' school year</b>	1 August 2019	1 August 2019
<b>End of teachers' school year</b>	31 July 2020	31 July 2020

Source: Eurydice

#### Additional notes

According to Switzerland's federal structure, the starting date/end of students' school year (for details see Table I) and school holidays vary between cantons, in some cantons even between municipalities (for details see Table II).

With a few exceptions, the teachers' official school year starts 1st August and ends on 31 July. However, it is at the school's discretion to decide whether teachers are expected to start or end later (in order to attend meetings, to prepare for teaching, etc.).

The only national holiday is 1st August (National Day). All other public and religious holidays are fixed by the cantons. New Year's Day, Ascension and Christmas Day are the only holidays all cantons have in common. In most cantons Good Friday, Easter Monday, Whit Monday and Boxing Day are also official holidays.

## SWITZERLAND (CONTINUED)

**TABLE I: Specification for starting/end of students' school year and summer holidays**

Canton	Beginning of students' school year 2019/20	End of students' school year 2019/20	Summer holidays 2020
Aargau <sup>(1)</sup>	12 August 2019	17 July 2020	18 July – 9 August
Appenzell Innerrhoden*	12 August 2019	3 July 2020	4 July – 16 August
Appenzell Ausserrhoden	12 August 2019	3 July 2020	4 July – 9 August
Bern*	12 August 2019	3 July 2020	4 July – 9 August
Basel-Landschaft	12 August 2019	26 June 2020	27 June – 9 August
Basel-Stadt	12 August 2019	26 June 2020	27 June – 9 August
Fribourg*	29 August 2019	3 July 2020	4 July – 26 August
Geneva	26 August 2019	26 June 2020	27 June – 23 August
Glarus	12 August 2019	26 June 2020	27 June – 9 August
Graubünden*	19 August 2019	26 June 2020	27 June – 16 August
Jura	19 August 2019	3 July 2020	4 July – 16 August
Lucerne*	19 August 2019	3 July 2020	4 July – 16 August
Neuchâtel	19 August 2019	3 July 2020	4 July – 16 August
Nidwalden*	19 August 2019	3 July 2020	4 July – 16 August
Obwalden*	19 August 2019	3 July 2020	4 July – 16 August
St. Gallen	12 August 2019	3 July 2020	4 July – 9 August
Schaffhausen	12 August 2019	3 July 2020	4 July – 9 August
Solothurn	12 August 2019	3 July 2020	4 July – 9 August
Schwyz*	19 August 2019	3 July 2020	4 July – 9 August
Thurgau	12 August 2019	3 July 2020	4 July – 9 August
Ticino	2 September 2019	19 June 2020	20 June – 30 August
Uri*	19 August 2019	3 July 2020	4 July – 16 August
Vaud	26 August 2019	3 July 2020	4 July – 23 August
Valais*	19 August 2019	19 June 2020	20 June – 16 August
Zug	19 August 2019	3 July 2020	4 July – 16 August
Zurich*	19 August 2019	10 July 2020	11 July – 16 August

\* with variation between regions/municipalities

<sup>(1)</sup> A total of four additional holiday weeks per year determined by the district school council.

## SWITZERLAND (CONTINUED)

**TABLE II: Specification of shorter holiday periods**

Canton	Autumn 2019	Christmas / New Year 2019/20	Winter 2020	Spring / Easter 2020
Aargau <sup>(2)</sup>	28 Sept. – 13 Oct.	21 Dec. – 5 Jan.	variable	4-19 April
Appenzell Innerrhoden*	5-20 Oct.	21 Dec. – 5 Jan.	21 Feb. – 1 March	4-19 April
Appenzell Ausserrhoden*	28 Sept. – 20 Oct.	21 Dec. – 5 Jan.	variable	4-19 April
Bern*	21 Sept. – 13 Oct.	21 Dec. – 5 Jan.	variable	4-19 April
Basel-Landschaft*	28 Sept. – 13 Oct.	21 Dec. – 5 Jan.	22 Feb. – 8 March	4-19 April
Basel-Stadt	28 Sept. – 13 Oct.	21 Dec. – 5 Jan.	22 Feb. – 8 March	4-19 April
Fribourg*	19 Oct. – 3. Nov.	21 Dec. – 5 Jan.	22 Feb. – 1 March	4-19 April
Geneva	19-27 Oct.	21 Dec. – 5 Jan.	8-16 Feb.	9-19 April
Glarus	5-20 Oct.	21 Dec. – 5 Jan.	25 Jan. – 2 Feb.	2-19 April
Graubünden*	5-20 Oct.	21 Dec. – 5 Jan.	22 Feb. – 1 March	18 April – 3 May
Jura	5-20 Oct.	21 Dec. – 5 Jan.	15-23 Feb.	10-26 April
Lucerne*	28 Sept. – 13 Oct.	21 Dec. – 5 Jan.	15 Feb. – 1 March	10-26 April
Neuchâtel	5-20 Oct.	21 Dec. – 5 Jan.	22 Feb. – 1 March	10-26 April
Nidwalden*	28 Sept. – 13 Oct.	21 Dec. – 5 Jan.	15 Feb. – 1 March	10-26 April
Obwalden*	28 Sept. – 13 Oct.	21 Dec. – 5 Jan.	15 Feb. – 1 March	10-26 April
St. Gallen	28 Sept. – 20 Oct.	21 Dec. – 5 Jan.	variable	4-19 April
Schaffhausen	28 Sept. – 20 Oct.	21 Dec. – 5 Jan.	25 Jan. – 9 Feb.	10-26 April
Solothurn*	28 Sept. – 20 Oct.	21 Dec. – 5 Jan.	1-16 Feb.	4-19 April
Schwyz*	28 Sept. – 13 Oct.	24 Dec. – 6 Jan.	22 Feb. – 1 March	25 April – 10 May
Thurgau	5-20 Oct.	21 Dec. – 5 Jan.	25 Jan. – 2 Feb.	28 March – 13 April
Ticino	26 Oct. – 3 Nov.	21 Dec. – 5 Jan.	22 Feb. – 1 March	10-19 April
Uri*	5-20 Oct.	21 Dec. – 5 Jan.	15 Feb. – 1 March	25 April – 10 May
Vaud	12-27 Oct.	21 Dec. – 5 Jan.	15-23 Feb.	10-26 April
Valais*	24 Oct. – 3 Nov.	21 Dec. – 5 Jan.	22 Feb. – 1 March	10-19 April
Zug	5-20 Oct.	21 Dec. – 5 Jan.	1-16 Feb.	10-26 April
Zurich*	5-20 Oct.	21 Dec. – 5 Jan.	8-23 Feb.	10-26 April

\* with variation between regions/municipalities

<sup>(2)</sup> A total of four additional holiday weeks per year determined by the district school council.

## TURKEY

### Organisation of school time in primary and general secondary education – 2019/20

	Primary education	General secondary education
<b>Starting date of students' school year</b>	9 September 2019 (1st grade – 5 September 2019)	9 September 2019 (1st grade – 5 September 2019)
<b>Mid-semester break</b>	18-22 November 2019	18-22 November 2019
<b>End of students' school year</b>	19 June 2020	19 June 2020
<b>Christmas/New Year</b>	1 January 2020	1 January 2020
<b>Winter/Carnival</b>	2 weeks 20-31 January 2020	2 weeks 20-31 January 2020
<b>Mid-semester break</b>	6-10 April 2020	6-10 April 2020
<b>Summer</b>	12 weeks 19 June – 7 September 2020	12 weeks 19 June – 7 September 2019
<b>Public/religious holidays</b>	29 October 2019 (1 day – Republic Day) 1 January 2020 (1 day – New Year holiday) 23 April 2020 (1 day – Children's Day) 1 May 2020 (1 day – Labour Day) 19 May 2020 (1 day – Youth and Sport Day) 23-25 May 2020 (2 days – Ramadan holiday)	29 October 2019 (1 day – Republic Day) 1 January 2020 (1 day – New Year holiday) 23 April 2020 (1 day – Children's Day) 1 May 2019 (1 day – Labour Day) 19 May 2020 (1 day – Youth and Sport Day) 23-25 May 2020 (2 days – Ramadan holiday)
<b>Starting date of teachers' school year</b>	Beginning September	Beginning September
<b>End of teachers' school year</b>	Beginning July	Beginning July

Source: Eurydice.

#### Additional notes

In primary and general secondary education, a school year must contain at least 180 days. A school year runs 9 months from September to June. The total number of public/religious holidays is 7 days in the 2019/20 educational year. A school year is divided into two parts: at the end of a semester, there is a two-week holiday, called mid-school year holiday. In addition, by 2019/20, there will be two mid-semester breaks in November and April, both of which are five-day in-semester breaks. The summer holidays are between June and September. Decisions on ending/starting semester dates are made by the Ministry.

Source: The work schedule of Ministry of National Education.

## UNITED KINGDOM – ENGLAND

### Organisation of school time in primary and general secondary education – 2019/20

	Primary education	General secondary education
<b>Starting date of students' school year</b>	First week of September 2019	First week of September 2019
<b>End of students' school year</b>	Mid-end July 2020	Mid-end July 2020
<b>Autumn holidays</b>	1 week 21 to 25 October <i>or</i> 28 October to 1 November 2019	1 week 21 to 25 October <i>or</i> 28 October to 1 November 2019
<b>Christmas/New Year</b>	2 weeks between 23 December 2019 and 3 January 2020	2 weeks between 23 December 2019 and 3 January 2020
<b>Winter/Carnival</b>	1 week 17 to 21 February 2020	1 week 17 to 21 February 2020
<b>Spring/Easter</b>	2 weeks 6 to 17 April 2020	2 weeks 6 to 17 April 2020
<b>Third term</b>	1 week 25 to 29 May 2020	1 week 25 to 29 May 2020
<b>Summer</b>	6 weeks between mid-July and first week of September 2020	6 weeks between mid-July and first week of September 2020
<b>Public/religious holidays</b>	8 May 2020 – early May bank holiday	8 May 2020 – early May bank holiday
<b>Starting date of teachers' school year</b>	First week of September 2019	First week of September 2019
<b>End of teachers' school year</b>	Mid-end July 2020	Mid-end July 2020

Source: Eurydice.

#### Additional notes

The school year is normally divided into three terms, each of which is divided into two half terms separated by a half term holiday. Students have a total of around 14 weeks' holiday per year. The dates of school holidays take into account and cover most public holidays including Easter.

The table shows the typical patterns for maintained community and voluntary-controlled schools, for which term dates are determined by the local authority. For foundation and voluntary-aided schools (other categories of maintained school), term dates are determined by the school governing body. For academies (which constitute the majority of secondary schools and a large minority of primary schools), there are no regulations; the academy trust determines the number of school sessions and the term dates.

Maintained schools are required to be open for a minimum of 380 half-day sessions each year, in accordance with the Education (School Day and School Year) (England) Regulations 1999, as amended. Teachers are required to be available for five additional days when pupils are not present, i.e. for 195 days in total. These days are for other duties additional to teaching and are usually used for staff training and development. Individual schools can decide when to schedule these days within term time and many schools schedule some or all of these days either at the start or end of term.

Schools with a significant number of pupils who will be celebrating non-Christian religious festivals (for example Eid-UI-Adha, Eid-UI-Fitr, Guru Nanak's birthday, Diwali) may consider making these optional closure days.

## UNITED KINGDOM – WALES

### Organisation of school time in primary and general secondary education – 2019/20

	Primary education	General secondary education
<b>Starting date of students' school year</b>	2 September 2019	2 September 2019
<b>End of students' school year</b>	20 July 2020	20 July 2020
<b>Autumn holidays</b>	1 week 28 October to 1 November 2019	1 week 28 October to 1 November 2019
<b>Christmas/New Year</b>	2 weeks 23 December 2019 to 3 January 2020	2 weeks 23 December 2019 to 3 January 2020
<b>Winter/Carnival</b>	1 week 17 to 21 February 2020	1 week 17 to 21 February 2020
<b>Spring/Easter</b>	2 weeks 6 to 17 April 2020	2 weeks 6 to 17 April 2020
<b>Third term</b>	1 week 25 to 29 May 2020	1 week 25 to 29 May 2020
<b>Summer</b>	6 weeks 20 July to first week of September 2020	6 weeks 20 July to first week of September 2020
<b>Public/religious holidays</b>	8 May 2020 – early May bank holiday	8 May 2020 – early May bank holiday
<b>Starting date of teachers' school year</b>	First week of September 2019	First week of September 2019
<b>End of teachers' school year</b>	Third week of July 2020	Third week of July 2020

Source: Eurydice.

#### Additional notes

Traditionally, the school year is divided into three terms, each of which is divided into two half terms separated by a half term holiday. Students have approximately 14 weeks' holiday per year. The dates of school holidays are normally planned to take into account and cover most national public holidays including Easter.

The Education (School Day and School Year) (Wales) Regulations 2003 (as amended) require schools to be open for a minimum of 380 half-day sessions each year. Teachers are required to be available for other duties, such as training and development, for five additional days when pupils are not present, i.e. for 195 days in total.

Under the Education (Wales) Act 2014, local authorities (LAs) and the governing bodies of voluntary aided and foundation schools are under a duty to co-operate and co-ordinate with each other to ensure that term dates are the same or as similar as possible. For 2019/20, consistent dates have been agreed by 19 of the 22 LAs. Three – Carmarthenshire, Ceredigion and Powys – will begin on 3 September 2019, and Ceredigion, Pembrokeshire and Powys will finish on 17 July 2020.



## UNITED KINGDOM – NORTHERN IRELAND

### Organisation of school time in primary and general secondary education – 2019/20

	Primary education	General secondary education
<b>Starting date of students' school year</b>	2 September 2019	2 September 2019
<b>End of students' school year</b>	30 June 2020	30 June 2020
<b>Autumn holidays</b>	2 days 31 October to 1 November 2019	2 days 31 October to 1 November 2019
<b>Christmas/New Year</b>	2 weeks 23 December 2019 to 3 January 2020	2 weeks 23 December 2019 to 3 January 2020
<b>Winter/Carnival</b>	2 days 17 to 18 February 2020	2 days 17 to 18 February 2020
<b>Spring/Easter</b>	7 days 9 to 17 April 2020	7 days 9 to 17 April 2020
<b>Third term</b>	–	–
<b>Summer</b>	9 weeks Between 1 July and first week of September 2020	9 weeks Between 1 July and first week of September 2020
<b>Public/religious holidays</b>	8 May 2020 – early May bank holiday 25 May 2020 – late May bank holiday	8 May 2020 – early May bank holiday 25 May 2020 – late May bank holiday
<b>Starting date of teachers' school year</b>	2 September 2019	2 September 2019
<b>End of teachers' school year</b>	30 June 2020	30 June 2020

Source: Department of Education (DE) School holidays [article](#)

#### Additional notes

Schools are required to be in operation for 200 days. The number of days that pupils are taught in the classroom may vary from 185 to 190 days when optional closing days, teacher training days and School Development Days (SDDs) are taken into account. Students have approximately 14 weeks' holiday per year.

The five optional closing days may be taken as an extension to the Easter, Christmas or summer holidays or to cover closure in exceptional circumstances, for example, the death of someone connected with the school or a planned event such as a move to new premises/building work or a religious holiday.

Teachers are required to be available for work on 195 days, of which no more than 190 days should involve teaching children in the classroom. The remaining five non-contact days are usually used for training purposes. Schools may also avail themselves of up to five School Development Days (SDDs) for the purpose of school improvement and school/staff development. Decisions on when to take these days are set, depending on the legal category of the school, by the Education Authority or board of governors. For further information, see Circular [2018/20](#).

St. Patrick's Day 2020: In most years, some schools close on St. Patrick's Day, which is a public holiday. In 2020, St. Patrick's Day falls on Tuesday 17 March. This date is not included as a set day of closure in the Department of Education (DE) [article](#) on school holidays, but the article notes that, as catering and home to school transport services will not operate, schools may require to close on this date.

## UNITED KINGDOM – SCOTLAND

### Organisation of school time in primary and general secondary education – 2019/20

	Primary education	General secondary education
<b>Starting date of students' school year</b>	Mid-August 2019	Mid-August 2019
<b>End of students' school year</b>	End June/early July 2020	End June/early July 2020
<b>Autumn holidays</b>	All schools will take 1 to 2 weeks between 1 and 26 October 2019. Some will also take 1 to 2 days in September 2019 and/or November 2019.	All schools will take 1 to 2 weeks between 1 and 26 October 2019. Some will also take 1 to 2 days in September 2019 and/or November 2019.
<b>Christmas/New Year</b>	Around 2 weeks between 21 December 2019 to 8 January 2020	Around 2 weeks between 21 December 2019 to 8 January 2020
<b>Winter/Carnival</b>	From 1 day to 1 week between 4 and 26 February 2020	From 1 day to 1 week between 4 and 26 February 2020
<b>Spring/Easter</b>	About 2 weeks between 3 and 17 April 2020	About 2 weeks between 1 and 17 April 2020
<b>Summer mid-term holidays</b>	Schools will take at least one day between 4 and 28 May 2020, but some take up to 4 days during this period.	Schools will take at least one day between 4 and 28 May 2020, but many take up to 4 days during this period.
<b>Summer</b>	End June/early July 2020	End June/early July 2020
<b>Public/religious holidays</b>	Up to 3 days	Up to 3 days
<b>Starting date of teachers' school year</b>	Mid-August 2019	Mid-August 2019
<b>End of teachers' school year</b>	End June/early July 2020	End June/early July 2020

Source: Eurydice.

#### Additional notes

In Scotland, pupils attend school for 190 days a year, and have 71 holiday days. The teachers' school year is longer by 5 in-service days (195 days). There are around 30 holiday days during term time (i.e. excluding summer holidays and weekends). With the summer holidays it would be closer to 65 days in total, however this varies between schools due to different start and end dates.

As school holidays (and in-service days) are not fixed nationally, but by each of the 32 local education authorities, term dates vary from one authority to another. There are no differences between primary and secondary schools.

## ACKNOWLEDGEMENTS

---

# EDUCATION, AUDIOVISUAL AND CULTURE EXECUTIVE AGENCY

## Education and Youth Policy Analysis

Postal address:  
Avenue du Bourget 1 (J-70 – Unit A7)  
BE-1049 Brussels

<http://ec.europa.eu/eurydice>

**Coordination:** Gisèle De Lel

**Graphics:** Patrice Brel

## EURYDICE NATIONAL UNITS

---

### ALBANIA

---

Eurydice Unit  
European Integration and Projects Department  
Ministry of Education and Sport  
Rruga e Durrësit, Nr. 23  
1001 Tiranë

---

### AUSTRIA

---

Eurydice-Informationsstelle  
Bundesministerium für Bildung, Wissenschaft und  
Forschung  
Abt. Bildungsentwicklung und –monitoring  
Minoritenplatz 5  
1010 Wien

---

### BELGIUM

---

Unité Eurydice de la Communauté française  
Ministère de la Fédération Wallonie-Bruxelles  
Direction des relations internationales  
Boulevard Léopold II, 44 – Bureau 6A/008  
1080 Bruxelles

Eurydice Vlaanderen  
Departement Onderwijs en Vorming/  
Afdeling Strategische Beleidsondersteuning  
Hendrik Consciencegebouw 7C10  
Koning Albert II-laan 15  
1210 Brussel

Eurydice-Informationsstelle der Deutschsprachigen  
Gemeinschaft  
Ministerium der Deutschsprachigen Gemeinschaft  
Fachbereich Ausbildung und Unterrichtsorganisation  
Gospertstraße 1  
4700 Eupen

---

### BOSNIA AND HERZEGOVINA

---

Ministry of Civil Affairs  
Education Sector  
Trg BiH 3  
71000 Sarajevo

---

### BULGARIA

---

Eurydice Unit  
Human Resource Development Centre  
Education Research and Planning Unit  
15, Graf Ignatiev Str.  
1000 Sofia

---

### CROATIA

---

Agency for Mobility and EU Programmes  
Frankopanska 26  
10000 Zagreb

---

### CYPRUS

---

Eurydice Unit  
Ministry of Education and Culture  
Kimonos and Thoukydidou  
1434 Nicosia

---

### CZECHIA

---

Eurydice Unit  
Centre for International Cooperation in Education  
Dům zahraniční spolupráce  
Na Poříčí 1035/4  
110 00 Praha 1

---

### DENMARK

---

Eurydice Unit  
Ministry of Higher Education and Science  
Danish Agency for Science and Higher Education  
Bredgade 43  
1260 København K

---

### ESTONIA

---

Eurydice Unit  
Analysis Department  
Ministry of Education and Research  
Munga 18  
50088 Tartu

---

**FINLAND**

---

Eurydice Unit  
Finnish National Agency for Education  
P.O. Box 380  
00531 Helsinki

---

**FRANCE**

---

Unité française d'Eurydice  
Ministère de l'Éducation nationale et de la Jeunesse  
(MENJ)  
Ministère de l'Enseignement supérieur, de la Recherche et  
de l'Innovation (MESRI)  
Direction de l'évaluation, de la prospective et de la  
performance (DEPP)  
Mission aux relations européennes et internationales  
(MIREI)  
61-65, rue Dutot  
75732 Paris Cedex 15

---

**GERMANY**

---

Eurydice-Informationsstelle des Bundes  
Deutsches Zentrum für Luft- und Raumfahrt e. V. (DLR)  
Heinrich-Konen Str. 1  
53227 Bonn

Eurydice-Informationsstelle der Länder im Sekretariat der  
Kultusministerkonferenz  
Taubenstraße 10  
10117 Berlin

---

**GREECE**

---

Hellenic Eurydice Unit  
Directorate for European and International Affairs  
General Directorate for International, European Affairs,  
Education for Hellenic Diaspora and Intercultural  
Education  
Ministry of Education and Religious Affairs  
37 Andrea Papandreou Street (Office 2172)  
15180 Maroussi (Attiki)

---

**HUNGARY**

---

Hungarian Eurydice Unit  
Educational Authority  
19-21 Maros Str.  
1122 Budapest

---

**ICELAND**

---

Eurydice Unit  
The Directorate of Education  
Víkurbær 3  
203 Kópavogur

---

**IRELAND**

---

Eurydice Unit  
Department of Education and Skills  
International Section  
Marlborough Street  
Dublin 1 – DO1 RC96

---

**ITALY**

---

Unità italiana di Eurydice  
Istituto Nazionale di Documentazione, Innovazione e  
Ricerca Educativa (INDIRE)  
Agenzia Erasmus+  
Via C. Lombroso 6/15  
50134 Firenze

---

**LATVIA**

---

Eurydice Unit  
State Education Development Agency  
Valņu street 1 (5<sup>th</sup> floor)  
1050 Riga

---

**LIECHTENSTEIN**

---

Informationsstelle Eurydice  
Schulamt des Fürstentums Liechtenstein  
Austrasse 79  
Postfach 684  
9490 Vaduz

---

**LITHUANIA**

---

Eurydice Unit  
National Agency for School Evaluation of the Republic of  
Lithuania  
Geležinio Vilko Street 12  
03163 Vilnius

---

**LUXEMBOURG**

---

Unité nationale d'Eurydice  
ANEFORÉ ASBL  
eduPôle Walferdange  
Bâtiment 03 - étage 01  
Route de Diekirch  
7220 Walferdange

---

**MALTA**

---

Eurydice National Unit  
Directorate for Research, Lifelong Learning and  
Employability  
Ministry for Education and Employment  
Great Siege Road  
Floriana VLT 2000

---

**MONTENEGRO**

---

Eurydice Unit  
Vaka Djurovica bb  
81000 Podgorica

---

**NETHERLANDS**

---

Eurydice Nederland  
Ministerie van Onderwijs, Cultuur en Wetenschap  
Directie Internationaal Beleid  
Rijnstraat 50  
2500 BJ Den Haag

---

**NORTH MACEDONIA**

---

National Agency for European Educational Programmes  
and Mobility  
Boulevard Kuzman Josifovski Pitu, No. 17  
1000 Skopje

---

**NORWAY**

---

Eurydice Unit  
Ministry of Education and Research  
Kirkegata 18  
P.O. Box 8119 Dep.  
0032 Oslo

---

**POLAND**

---

Polish Eurydice Unit  
Foundation for the Development of the Education System  
Aleje Jerozolimskie 142A  
02-305 Warszawa

---

**PORTUGAL**

---

Unidade Portuguesa da Rede Eurydice (UPRE)  
Ministério da Educação e Ciência  
Direção-Geral de Estatísticas da Educação  
Av. 24 de Julho, 134  
1399-054 Lisboa

---

**ROMANIA**

---

Eurydice Unit  
National Agency for Community Programmes in the Field  
of Education and Vocational Training  
Universitatea Politehnică București  
Biblioteca Centrală  
Splaiul Independenței, nr. 313  
Sector 6  
060042 București

---

**SERBIA**

---

Eurydice Unit Serbia  
Foundation Tempus  
Ruze Jovanovic 27a  
11000 Belgrade

---

**SLOVAKIA**

---

Eurydice Unit  
Slovak Academic Association for International Cooperation  
Křížkova 9  
811 04 Bratislava

---

**SLOVENIA**

---

Eurydice Unit  
Ministry of Education, Science and Sport  
Education Development Office  
Masarykova 16  
1000 Ljubljana

---

**SPAIN**

---

Eurydice España-REDIE  
Centro Nacional de Innovación e Investigación Educativa  
(CNIIE)  
Ministerio de Educación y Formación Profesional  
c/ Torrelaguna, 58  
28027 Madrid

---

---

**SWEDEN**

---

Eurydice Unit  
Universitets- och högskolerådet/  
The Swedish Council for Higher Education  
Box 450 93  
104 30 Stockholm

---

**SWITZERLAND**

---

Eurydice Unit  
Swiss Conference of Cantonal Ministers of Education  
(EDK)  
Speichergasse 6  
3001 Bern

---

**TURKEY**

---

Eurydice Unit  
MEB, Strateji Geliştirme Başkanlığı (SGB)  
Eurydice Türkiye Birimi, Merkez Bina 4. Kat  
B-Blok Bakanlıklar  
06648 Ankara

---

**UNITED KINGDOM**

---

Eurydice Unit for England, Wales and Northern Ireland  
National Foundation for Educational Research (NFER)  
The Mere, Upton Park  
Slough, Berkshire, SL1 2DQ

Eurydice Unit Scotland  
Learning Directorate  
Scottish Government  
2-C North  
Victoria Quay  
Edinburgh EH6 6QQ





## **The Organisation of School Time in Europe. Primary and General Secondary Education – 2019/20**

The school calendar contains national data on the length of the school year, the start and the end dates of each school year, the timing and length of school holidays and the number of school days. Key points are illustrated by comparative figures. The information is available for 38 countries covering both primary and general secondary education.

---

The Eurydice network's task is to understand and explain how Europe's different education systems are organised and how they work. The network provides descriptions of national education systems, comparative studies devoted to specific topics, indicators and statistics. All Eurydice publications are available free of charge on the Eurydice website or in print upon request. Through its work, Eurydice aims to promote understanding, cooperation, trust and mobility at European and international levels. The network consists of national units located in European countries and is coordinated by the EU Education, Audiovisual and Culture Executive Agency. For more information about Eurydice, see <http://ec.europa.eu/eurydice>.

